

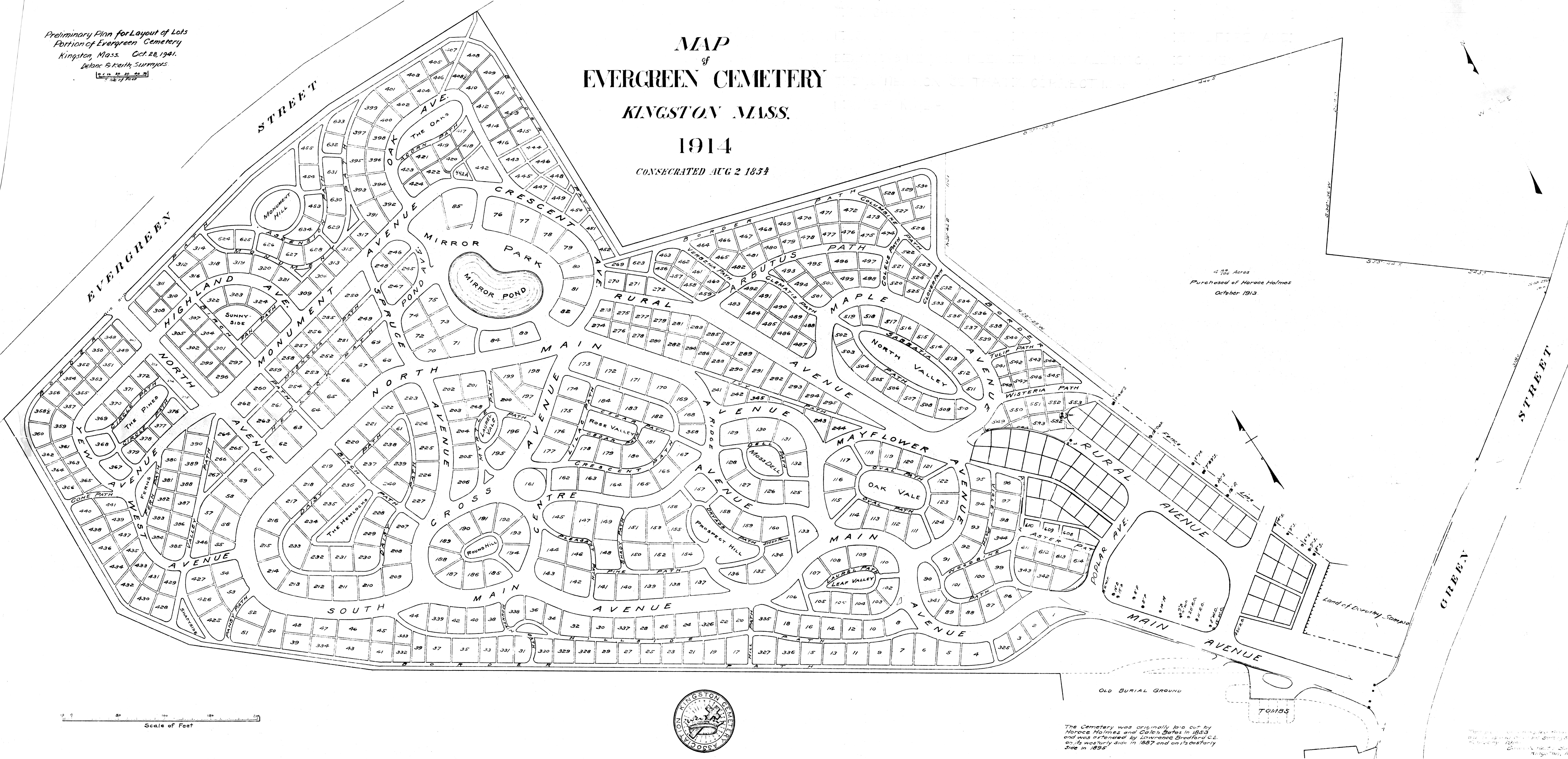
Preliminary Plan for Layout of Lots
 Portion of Evergreen Cemetery
 Kingston, Mass. Oct. 28, 1914.
 Delane & Keith, Surveyors.

Scale of Feet

MAP of EVERGREEN CEMETERY KINGSTON MASS.

1914

CONSECRATED AUG 2 1854



4.26 Acres
 Purchased of Horace Holmes
 October 1913

Lot of Dorothy Sampson



The Cemetery was originally laid out by
 Horace Holmes and Calvin Bates in 1853
 and was extended by Leonard Bradford & Co.
 on its westerly side in 1887 and on its easterly
 side in 1895

Small text at the bottom right corner, likely a surveyor's note or reference.