

CLASS OF 1901.

Olive Alden Baker,
E. Helen Callahan,
Laura Mae Cole,
Clarence Robbins Drew,
Ada Foster Kennedy,
Herbert F. Randall,

Alice Blanchard,
Edgar Hartley Chandler,
Robert Ellis Cushman,
Jennie Tower Ford,
Leon Leslie Lowe,
Mabel Norton Simmons.

THE FREDERIC C. ADAMS PRIZES.

First.

Ada F. Kennedy,

Winthrop D. Ford.

Second.

Helen Callahan.

Robert E. Cushman.

Third.

Harriet B. Thompson.

J. Albert Holmes.

Fourth.

Abbie B. Randall.

Francis W. Clemens.

Fifth.

Nora M. Prendergast.

Archie E. Phinney.

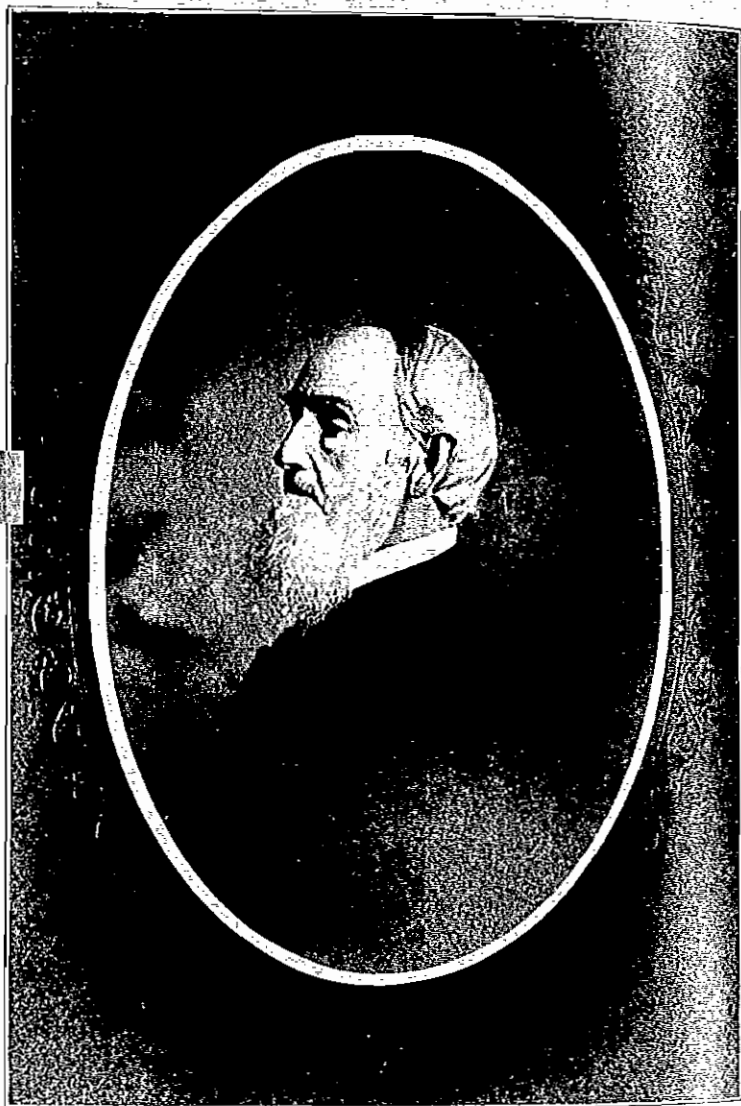
TOWN OF KINGSTON



ANNUAL REPORT

FOR THE YEAR

1902



PORTRAIT OF DR. HENRY N. JONES.

Born in Epping, N. H., Oct. 15, 1815. Graduated from the Dartmouth Medical School in 1840. Practiced as a physician in Canaan, N. H., till 1840 when he moved to Kingston. He continued his professional practice until within a few days of his death, Dec. 18, 1890.

ANNUAL REPORT
OF THE
TOWN OFFICERS
OF
KINGSTON
MASSACHUSETTS.

For the Financial Year Ending
December 31, 1902.

WITH THE
REPORT OF THE SCHOOL COMMITTEE.
For the School Year, 1902.

PLYMOUTH
THE MEMORIAL PRESS
1903

ANNUAL REPORT

OF THE

TOWN OF KINGSTON, MASS.

ANNUAL MARCH MEETING, 1902.

Agreeably to a warrant given under the hands of the Selectmen and duly served and return thereof made by Ellsworth C. Bailey, a Constable of the Town of Kingston, the inhabitants, qualified to vote in town affairs, met at the Town Hall on Monday, the 3d day of March, 1902, and organized by choice of Walter H. Faunce, as Moderator.

Messrs. Samuel Atwell, Arthur M. Bonney, Amos P. Bradford, Albert E. Holmes, Charles F. Atwell and William J. O'Brien were appointed as Tellers and were sworn by the Moderator.

Balloted and chose for:—

SELECTMEN AND ASSESSORS—Samuel Atwell, David Delano, Walter H. Faunce.

TOWN CLERK, TREASURER AND COLLECTOR OF TAXES—Henry S. Everson.

OVERSEERS OF THE POOR—Samuel Atwell, John N. Drew, Walter H. Faunce.

CONSTABLES—Ellsworth C. Bailey, Ephraim Pratt.

AUDITOR—Lemuel R. Ford.

ROAD COMMISSIONER FOR THREE YEARS—E. Elbridge Atwood.

WATER COMMISSIONER FOR THREE YEARS—Edward G. Brown.

TREE WARDEN—Alexander Holmes.

SCHOOL COMMITTEE—Joshua Delano, Jr., for 3 years; John T. Thompson, for 3 years.

TRUSTEES OF PUBLIC LIBRARY—Ernest M. Bartlett, for 3 years; Harvey A. Soule, for 3 years.

The following officers were nominated and chosen by vote:—

POUND KEEPER—Caleb E. Bailey.

FIELD DRIVERS—George L. Churchill, James E. Tobin.

SURVEYORS OF LUMBER—Walter C. Hammond, George B. Holmes, M. Parker Delano.

SURVEYORS OF WOOD—E. Elbridge Atwood, Horace Holmes.

FISH COMMITTEE—Wendell O. Chandler, James A. Hickey, John N. Drew, Charles C. Delano.

TOWN HOUSE COMMITTEE—The Selectmen.

FENCE VIEWERS—Alexander Holmes, Carl C. Faunce, Nahum Sampson.

Voted, To accept the reports of Town Officers and Committees.

Voted, That the care of the burying ground be left in the hands of the Tree Warden.

Voted, That no payment be made from the Treasury, except upon orders of the Selectmen or by direct vote of the Town authorizing the same, and that no order upon the Treasury shall be paid after the Collector shall have received his warrant for the collection of taxes until the person in whose favor the order is drawn shall have paid his tax.

Voted, That all taxes be paid on or before the 10th day of October, next, and that the Collector proceed to collect by legal process, all taxes unpaid after that date.

Voted, That interest at the rate of six per cent. per annum be charged on all unpaid taxes and upon all taxes of the

current year remaining unpaid after the 10th day of October next, until collected.

Voted, That the Treasurer be authorized to hire money, with the approval of a majority of the Selectmen, in anticipation of taxes of the current year and to be paid from the same.

Voted, That the financial year of the Town close Dec. 31, 1902, and that the annual Town Meeting be held on the first Monday of March, 1903.

Voted, That the Water Commissioners employ a Superintendent of Water Works and a Clerk, the salary of both not to exceed \$600.

Voted, That the Town pay a bounty of 25c. each for the heads of hawks and woodchucks killed within the Town.

Voted, That all money received by the Town on account of the Plymouth & Brockton Street Railway, be expended by the Road Commissioners for crushed stone, the cost of placing the same on the road to be charged to the general highway account, the same to be expended before the 31st day of May next.

Voted, That the request of E. Elbridge Atwood and Onslow W. McLauthlin that their names be withdrawn from the Jury list, be granted.

Voted, That the name of Edward E. Bird be added to the list and that the following list be accepted, viz:—

Adams, Charles H., mason.

Atwell, Samuel, carpenter.

Baker, Walter, painter.

Barstow, Daniel, shoemaker.

Berry, Roscoe G., farmer.

Bisbee, Daniel, shoemaker.

Bird, Edward E.

Chandler, Elbridge H., surveyor.

Chandler, Fred C., carpenter.

Clemons, Joseph W., farmer.

Cobb, John W., clerk.
 Cole, Frank L., carpenter.
 Dunbar, Ruel W., blacksmith.
 Elder, Eugene G., annealer.
 Green, Evans, retired.
 Everson, Henry S., clerk.
 Faunce, Charles T., mason.
 Foster, H. Waldo, carpenter.
 McLaughlin, Philemon W., tack manufacturer.
 Reidel, Robert, machinist.
 Weston, Daniel, carpenter.
 Wilbur, Charles C., tacker.
 Woodward, Frank C., mason.

Voted. That the following appropriations be made:—

Contingent account,	\$1,600 00
Support of poor,	2,500 00
Teachers' wages,	4,900 00
Books and supplies,	600 00
Fuel and care,	1,000 00
Repairs,	900 00
Conveyance,	375 00
Incidentals,	225 00
Superintendent of Schools,	300 00
Music,	300 00
Drawing,	250 00
Highway,	3,500 00
Special highway,	500 00
State Aid,	450 00
Soldier' relief,	500 00
Memorial Day,	100 00
Care of burying ground,	50 00
Tree Warden,	250 00
Water Department,	800 00
Water bonds, notes and interest,	3,000 00
Fire Department,	650 00

Town House,	100 00
Suppression of liquor traffic,	150 00
Treasurer and Collector,	350 00
Public Library,	900 00

Amount of appropriations, \$24,250. Upon representation made that the receipts into the Town Treasury from various sources would probably amount to at least \$10,000, it was voted that the sum of \$15,000 be raised by taxation for the various Town purposes and that the Assessors be authorized and directed to assess the same.

Voted, That this meeting be dissolved.

SPECIAL TOWN MEETING.

Held June 14th, 1902, by request of the School Committee and for the following purposes:—

"To see what the Town will do in the matter of providing additional accommodations for the Public Schools and to appropriate such sums as shall be needed to carry into effect any votes of the Town in relation thereto, and to authorize and instruct the Selectmen to hire said money on notes of the Town."

The meeting was organized by choice of the Rev. Arthur W. Smith as Moderator.

Voted, That the subject matter before the meeting be left with a Committee, consisting of the School Committee and Selectmen, that said Committee investigate as to the necessity for additional school buildings and report at some future meeting.

Voted, To adjourn.

ASSESSMENT OF TAXES.

1902.

Valuation of personal estate,	\$470,345 00
Valuation of real estate,	939,195 00
Total valuation,	\$1,409,540 00

Rate of taxation, \$12 per \$1,000.

Number of polls, 523; poll tax, \$2.

Town grant,	\$15,000 00	
County tax,	1,754 60	
State tax,	825 00	
Overlay,	380 88	
Total assessment,		\$17,960 48

Assessment on personal estate,	\$ 5,644 14
Assessment on real estate,	11,270 34
Assessment on polls,	1,046 00

Acres of land taxed,	10,359
Dwelling houses taxed,	502
Horses taxed,	242
Cows taxed,	198
Other cattle taxed,	57
Swine taxed,	25
Number of taxes,	802

ORDERS PAID.

SUPPORT OF SCHOOLS.

Teachers' Wages.

Paid—	
Bagnell, Frances L.,	\$ 60 60
Baker, Stella B.,	386 40
Bates, Inez E.,	237 75
Brown, Eva L.,	296 00
Carleton, Julia C.,	520 00
Casey, Susan,	127 00
Curran, Mary,	292 25
Drew, Mary,	192 00
Dunbar, Lydia W.,	383 00
Faunce, Sarah C.,	358 00
Kempton, Alvan A.,	1,000 00
Gale, Joan P.,	130 00
Marston, Maude H.,	104 00
Packard, Josephine S.,	481 00
Stone, Eva E.,	346 00
Stormes, Alice B.,	481 00

Total, \$5,392 00

School Books.

American Book Co., supplies,	\$ 52 23
Edward E. Babb & Co.,	167 58
Houghton, Mifflin & Co.,	18 62
Ginn & Co.,	137 57
J. L. Hammett & Co.,	9 00
Cupples & Schoenhof,	3 96

Ketelle School of Design,	40
The Morse Co.,	19 58
Leavenworth & Green,	15 00
L. E. Knott & Co.,	66 16
Maynard, Merrill & Co.,	27 59
Silver, Burdett & Co.,	60 56
Benjamin H. Sanborn & Co.,	24 71
Thomas R. Shewell & Co.,	9 84
George F. King Co.,	179 45
D. C. Heath & Co.,	45 03
Werner School Book Co.,	21 28
Thompson, Brown & Co.,	4 00

Total, \$862 56

Repairs.

Paid—

Chandler Adjustable Chair & Desk Co., supplies,	\$138 92
H. P. Bailey & Co., supplies,	2 95
Co-operative Store Co., supplies,	43 13
Wm. H. Myrick, supplies,	42 42
Whitman, Sparrow & Co., supplies,	5 00
Fred G. Brackett, supplies,	5 48
Frank L. Cole, labor and supplies,	343 43
H. Waldo Foster, labor and supplies,	99 65
Thompson & Holmes, labor and supplies,	62 24
Samuel Atwell, labor and supplies,	5 00
George H. Clark, labor and supplies,	7 36
Michael T. Callahan, labor and supplies,	29 25
James F. Blanchard labor,	61 65
Lucy M. Robbins,	2 60

Expended, \$849 08

Fuel and Care.

Barstow, Benjamin,	\$ 6 75
Bates, Inez E.,	6 00

Brown, Eva L.,	16 25
Bryant, George B.,	3 20
Caldwell, Patrick,	2 44
Churchill, George L.,	20 87
Clemons, Harry W.,	18 00
Cobb, John W.,	247 38
Cooperative Store Co.,	16 39
Cushman, George E.,	59 10
Cushman, Robert E.,	23 15
Foster, H. Waldo,	328 43
Fuller, Franklin P.,	1 50
Halligan, K. M.,	10 00
Hammond, W. Clarence,	7 88
Hartin, Ann,	12 00
Hartin, John F.,	1 50
Loring, Edgar W.,	190 65
McLauthlen, Philemon W.,	13 50
Nickerson, L.,	16 00
Ripley, Obed,	64 25
Simmons, Augustus,	13 00
Stephan, Mrs. Jacob,	2 00
Stephan, Jacob,	2 00
Ward, William G.,	16 50
Washburn, Martin P.,	2 43

\$1.075 17

Expended.

School Incidentals.

Paid—

Ellsworth C. Bailey, truant officer,	\$37 50
Benj. P. Barstow, services,	8 00
Bittinger Bros., printing,	17 48
Elwood B. Chandler, team,	5 37
J. B. Collingwood & Sons, supplies,	2 70
George E. Cushman, supplies,	32
Chas. C. Doten, printing,	1 65

H. Waldo Foster, labor and supplies,	1 69
Hammett & Co.,	8 85
A. A. Kempton, supplies,	1 75
H. C. Kendall, supplies,	2 25
Wm. H. Myrick, supplies,	17 54
N. Y. & Boston Despatch Co., expressage,	5 80
Ephraim Pratt, services,	1 00
Nahum Sampson, labor,	2 00
B. O. Strong, supplies,	5 55
The Boston Regalia Co.,	10 50
C. E. Percy Thompson, taking census of children,	12 00
John T. Thompson, services,	6 00
Hoyt H. Tucker, supplies,	8 90
Wadsworth, Howland & Co., supplies,	10 57
Whitman, Sparrow & Co., supplies,	4 34
E. S. Wright, supplies,	2 85
L. Nickerson, flags,	16 00
Silver, Burdette & Co., supplies,	1 95
Clement D. Bartlett, supplies,	3 00
John P. Farrington, supplies,	8 00

Expended, \$203 56

Superintendent of Schools.

Paid—

Hoyt H. Tucker, \$600 00

Conveyance.

Paid—

Brockton & Plymouth Street Railway Co.,	\$175 00
George L. Churchill,	148 00
George E. Owens,	46 40
E. T. Ford,	26 00

\$395 40

Music.

Paid—

Jerome F. Hanshue, \$275 00

Drawing.

Paid—
Lillian Newman,

\$250 00

SUPPORT OF HIGHWAYS.

General Highway.

Paid—

Adams, Horatio,	\$ 6 60
Atwood, E. Elbridge,	254 04
Atwood, Herbert,	8 40
Ayer, Eugene G.,	17 20
Bailey, Caleb E.,	57 00
Beytes, Harry,	15 50
Bisbee, Daniel,	21 50
Boop, Jacob,	5 40
Brackett, Fred G.,	211 10
Brown, Edward G.,	12 20
Bryant, Charles E.,	24 20
Bryant, George B.,	7 20
Bryant, Sylvanus,	44 80
Bryant, William B.,	5 00
Callahan, Michael T.,	93 20
Carey, Dennis,	14 40
Caspar, Jacob,	8 40
Center, John S.,	4 00
Chandler, Alfred W.,	66 80
Chandler, George F.,	3 60
Chandler, George T.,	7 50
Chandler, Horace J.,	16 20
Chandler, John F.,	22 40
Chandler, John S.,	12 60
Churchill, Otis,	13 20
Cobb, Philander,	36 40
Cobb, Philander 2d.,	7 80

Cole, Charles H.,	58 00
Comeau, S. James,	16 00
Cook, Edwin,	25 76
Cook, Henry T.,	16 50
Cushman, George E.,	9 00
Delano, David,	69 40
Delano, M. Parker,	4 00
Devine, Arthur,	14 00
Drake, Mrs. N. M.,	11 08
Drew, Eli C., heirs of,	3 20
Dunbar, Ruel W.,	21 20
Emond, Arthur,	21 60
Faunce, Carl C.,	1 20
Faunce, Charles T.,	7 20
Faunce, Eliezer,	6 88
Finney, Stephen,	83 20
Foster, Lewis S.,	17 00
Geel, Benjamin H.,	12 00
Good Roads Machine Co.,	19 00
Gray, Samuel W.,	5 40
Hall, John F.,	11 32
Hammond, Asa C.,	21 60
Hart, Dennis,	76 20
Hart, John,	4 00
Hartin, John,	16 10
Hartman, John,	16 20
Holmes, Alexander,	20 10
Holmes, Helen,	1 28
Holmes, Joseph A.,	30 00
Holmes, Lemuel B.,	3 00
Kennedy, Mary O.,	4 80
Lane, George F.,	52 60
Lanman, Wallace N.,	33 22
Low, Charles E.,	3 60
Lowe, Leon,	2 50

Mange, Winthrop H.,	2 60
Mass. Broken Stone Co.,	1,029 69
McCrane, James,	69 00
McIntyre, Daniel,	1 20
McLauthlin, Edwin L.,	28 00
McLauthlin, Fred B.,	3 20
McGrath, Michael H.,	2 00
Merry, Everett S.,	80
Miller, Jacob,	64 02
Morey, Charles S.,	6 80
Mullaney, John,	3 60
Murray, John,	26 40
Myrick, William H.,	14 40
N. Y., N. H. & H. Railroad Co.,	11 90
O'Brien, Joseph,	16 00
Owens, George E.,	92 30
Padelford, Theodore,	35 80
Pierce, James B.,	67 20
Potter, William,	28 63
Pratt, Alphonzo,	17 60
Prouty, George,	1 95
Quinn, John,	14 40
Ransom, Charles A.,	9 00
Ripley, Obed,	1 00
Rogerson, Philip S.,	12 60
Rudolph, Jacob,	20 70
Ryan, Alexander,	5 40
Sampson, Isaac L.,	54 80
Sampson, Nahum,	204 85
Sampson, William A.,	21 00
Schaefer, Charles,	62 82
Schilling, Gottfried,	63 00
Sherman, Peter,	22 40
Simmons, Augustus,	30 00
Simmons, Fred M.,	2 00

Smith, Adam.	35 60
Smith, Philip.	75 60
Smith, William.	5 40
Stephan, Jacob.	30 62
Stranger, Harrison.	2 60
Terry, Eliza.	3 04
Tobin, James E..	22 60
Tobin, John.	1 60
Tyler, Stephen.	40 00
Ward, William G.,	35 10
Washburn, George H.,	24 00
Washburn, Martin P.,	42 60
Washburn, Waldo,	7 20
Wright, Ezra S..	1 20

Expended, \$4.153 55

By vote of the town at the annual March Meeting, \$3,500 was appropriated for highway purposes, and the Road Commissioners were directed to expend in addition, thereto, all sums received by the town from and on account of the electric railway, in the purchase of crushed stone, and that the expenditure should be made before the 1st day of May. The amount thus received was \$612.32, this sum added to the \$3,500 made the amount available for highway purposes \$4,112.32. All payments for crushed stone and for labor in building the Macadam road have been carried to this account, and the amount placed at the disposal of the Road Commissioners has been but slightly overdrawn.

Special Highway.

Alberquee, John.	\$ 25
Anderson, August.	2 12
Atwood, E. Elbridge.	17 00
Avery, Charles.	1 37
Ayer, Eugene G.,	2 00

Bailey, Herbert.	2 62
Barstow, Benjamin.	1 25
Bartlett, Clement D.,	3 00
Basler, Emile.	2 50
Basler, John.	1 25
Basler, Joseph.	2 12
Beytes, Harry.	1 00
Bird, Edward E.,	2 25
Bisbee, Daniel.	1 37
Blanchard, Lawrence,	87
Bonney, George.	25
Bonney, George A.,	1 50
Boop, Jacob.	87
Brackett, Fred. G.,	23 30
Breach, John.	74
Brown, Edward G.,	87
Bryant, George B.,	9 60
Brown, William.	87
Bryant, Sylvanus,	12 87
Bumpus, William A.,	6 62
Cantor, Raphael,	3 75
Carey, Dennis.	62
Caspar, Jacob.	1 00
Chandler, Alfred W.,	10 37
Chandler, Claude M.,	3 00
Chandler, Edgar H.,	4 74
Chandler, George T.,	1 88
Chandler, Leon.	1 85
Chandler, Oakley,	19
Churchill, Otis,	1 25
Cobb, Percy.	1 25
Cockran, William,	1 87
Cole, Charles H.,	62
Comeau, S. James,	3 25
Cook, Fred W.,	2 20

Cook, Henry T.,	6 82
Corrow, Frank,	1 25
Corrow, Henry,	2 12
Corrow, Fred,	1 12
Corrow, Joseph, Jr.,	1 37
Corrow, Lawrence,	2 68
Corrow, William,	2 87
Cushman, Howard,	3 12
Cushman, John,	1 75
Cushman, Lyman T.,	1 00
Delano, M. Parker,	1 25
Drake, Clarence B.,	75
Drew, Charles H.,	1 75
Drew, Clarence R.,	3 12
Drew, George,	2 00
Drew, John L.,	2 50
Dries, Henry,	1 62
Dube, Joseph,	1 00
Dunbar, Ruel W.,	2 75
Dyer, Alexander,	19
Everson, Henry S.,	1 00
Faulkner, Nelson,	25
Faunce, Carl C.,	1 50
Finney, Stephen,	3 62
Ford, Robert,	3 72
Ford, Winthrop,	2 87
Foster, H. Waldo,	2 68
Foster, Lewis S.,	4 62
Freeman, Howard,	2 12
Fuller, Frank,	87
Gandron, Arthur,	1 50
Gandron, Eugene,	1 50
Gandron, Frank,	1 50
Geel, Benjamin H.,	1 50
Gardiner, Lester,	80

Hart, Dennis,	5 37
Hickey, James,	2 75
Hickey, John W.,	2 00
Holmes, Alexander,	15 00
Howe, Edward H.,	20
Howe, Harold,	37
Howland, Charles F.,	1 00
Kennedy, Frank,	1 00
Lane, George F.,	2 00
Lapham, Albert,	1 12
Low, Charles E.,	3 00
Lowe, Leon,	2 37
Malone, Maurice,	60
Malone, Robert,	62
McCrane, James,	14 10
McGrath, Michael,	25
McLauthlen, Edwin L.,	4 50
McLauthlen, Frank W.,	1 50
McLauthlen, Fred B.,	7 50
McLauthlen, Horace B.,	36 40
McLauthlen, Philemon W.,	22 15
McLauthlen, Ralph,	40
McMannus, Charles,	1 50
Miller, George,	1 25
Miller, George P.,	1 25
Miller, Jacob,	4 12
Morin, John,	1 00
Murray, John,	4 50
Myrick, Alfred,	1 37
O'Brien, Patrick,	75
O'Brien, William J.,	1 00
Ormond, James,	2 25
Owens, George E.,	1 62
Palmer, Herbert B.,	1 00
Peck, Bertie,	1 00

Peck, John,	75
Peck, John, 3rd,	1 25
Pendergast, Edward,	1 75
Pendergast, Eugene,	87
Phinney, Archie,	3 50
Pierce, James B.,	1 62
Potter, William,	7 25
Pratt, Alphonzo,	2 00
Pratt, Benjamin,	1 25
Pratt, Elliot,	4 35
Pratt, George,	45
Pratt, Harold,	94
Reidel, Robert,	1 00
Ripley, Obed,	62
Robbins, L. T.,	31 15
Rudolph, Jacob,	5 25
Rudolph, William,	87
Ryan, Alexander,	1 75
Sampson, Albert,	1 00
Sampson, Chester,	3 00
Sampson, Isaac L.,	2 75
Sampson, Nahum,	21 75
Schaefer, John,	1 50
Schilling, Gottfried,	13 75
Shaw, Thaddeus P.,	12 00
Sheppart, William,	62
Sherman, Charles,	1 62
Sherman, Frank,	25
Sherman, Fred,	25
Sherman, H. B.,	2 12
Sherman, Peter,	1 37
Sherman, William,	25
Simmons, Augustus,	2 13
Simmons, Fred M.,	2 00
Smith, William,	1 87

Souer, Jacob,	87
Stegmaier, Carl,	2 00
Sturtevant, Henry,	3 50
Sturtevant, Lloyd,	1 50
Sturtevant, Simeon,	2 75
Sweeney, Edward,	87
Tache, Archie,	1 75
Tache, John,	1 25
Thomas, William M.,	87
Tobin, James E.,	4 37
Volk, Robert,	2 12
Walsh, Joseph,	2 00
Ward, William G.,	1 60
Washburn, Martin P.,	10 37
Watson, Herbert,	1 25
Williams, William,	87
Wolf, John,	87
Woodward, Carl,	50
Woodward, Lester,	40
Expended,	\$484 65

WATER DEPARTMENT.

Paid—	
Michael Ormond, services as superintendent,	\$242 00
Thomas Ormond, services as superintendent,	60 80
John Malone, services as superintendent,	236 15
Truman H. Fuller, services as clerk and collector,	75 00
Truman H. Fuller, cash paid,	5 25
Crosby Steam Gauge and Valve Co., supplies,	27 00
Walworth Manufacturing Co., supplies,	32 19
Braman, Dow and Co., supplies,	191 82
The Sumner and Goodwin Co., supplies,	27 54
Norrich Burnham and Co., supplies,	7 50
Knowles Steam Pump Works, supplies,	7 26

Dodge Manufacturing Co., supplies,	141 18
Coffin Valve Co., supplies,	56 00
The Fairbanks Co., supplies,	4 25
C. Drew & Co., supplies,	32 08
R. S. Huckins & Co., supplies,	138 28
The Chicago Raw Hide Manf. Co., supplies,	1 20
Seaside Foundry Co., supplies,	3 08
Bittinger Bros., printing,	15 75
George E. Cushman, supplies,	40 19
N. Y. & Boston Despatch Co.,	1 65
Whitman, Sparrow & Co., supplies,	1 50
William W. Myrick, supplies,	8 75
George H. Clark, supplies,	3 12
D. H. Craig, supplies,	46 07
Alexander Holmes, supplies,	2 75
H. P. Bailey & Bro., supplies,	6 50
Philemon W. McLaithlen, supplies,	2 00
Caleb E. Bailey, supplies,	4 20
Hathaway and Sampson, supplies,	24 70
George B. Holmes, labor,	212 14
Horace Holmes, labor,	95 00
Edward G. Brown, labor,	27 40
Philip S. Rogerson, labor,	4 50
Elwood B. Chandler, labor,	2 00
John Murray, labor,	2 35
Philip Smith, labor,	1 75
Thomas Hart, labor,	4 50
Jacob Boop, labor,	3 74
Expended,	\$1,804 51

WATER BOND NOTES AND INTEREST.

Paid—	
Elliott Natl. Bank for water bond No. 13,	\$1,000 00

Elliott Natl. Bank, for interest on bonds,	1,060 00
Elliott Natl. Bank for Note due, 1902,	500 00
Elliott Natl. Bank, interest on notes,	320 00
Elliott Natl. Bank for commissions,	7 20
Expended,	<u>\$2,887 20</u>

FIRE DEPARTMENT.

Paid—	
George H. Clarke, supplies,	\$ 2 69
Combination Ladder Co., supplies,	212 50
George E. Cushman, supplies,	1 13
Dudley H. Bradley, supplies,	2 00
Edgar H. Loring, supplies,	2 20
Murcer W. Ford, supplies,	4 00
Frank C. Woodward, supplies,	2 00
Philander Cobb, 2d.,	50
Eugene F. Elder, supplies,	99
Albert E. Holmes, supplies,	65
N. Y. & Boston Despatch Co., expressage,	65
Eugene F. Elder, chief engineer,	25 00
Albert E. Holmes, engineer,	6 67
Webster L. Thompson, engineer,	8 00
George E. Bailey, steward,	12 00
Robert E. Ford, steward,	12 00
Robert Seibenschu, steward,	4 00
Philander Cobb, 2d., steward,	8 00

Members of Hose Co. No 1.

George E. Bailey,	8 00
Edmund Benson,	7 43
Wendell O. Chandler,	8 00
M. Parker Delano,	8 00
Fred A. Hall,	8 00

James A. Hickey,	5 36
John Hickey,	8 00
Horace Holmes,	8 00
Alton Lowe,	2 67
John Malone,	8 00
Everett S. Merry,	8 00
Eugene O' Brien,	8 00
Chester Sampson,	2 67
Harvey A. Soule,	8 00
James A. Tobin,	3 35

Members of Hose Co. No. 2.

Russell Adams,	8 00
James F. Bonney,	8 00
Elwood B. Chandler,	8 00
Clarence R. Drew,	8 00
Ellis B. Ford,	8 00
Robert B. Ford,	8 00
Alton Gardiner,	6 00
Joseph W. Higgins,	8 00
Edward Loring,	8 00
Charles McCarty,	8 00
Fred Myrick,	2 00
Ephraim Pratt,	8 00
Henry T. Sturtevant,	8 00

Members of Hose Co. No. 3.

Samuel Austin,	8 00
Alfred Brown,	8 00
William Brown,	8 00
Philander Cobb, 2nd.,	8 00
Allen R. Gorham,	8 00
Andrew Grozenger,	4 65
M. Leighton,	3 35
John Reinhardt,	8 00

Henry Reinhardt,	8 00
Robert Seibenschu,	8 00
William M. Thomas,	8 00
Edward Sweeney,	8 00
William Sweeney,	8 00

\$598 46

One hundred and fifty-five orders were drawn and charged to account of forest fires, aggregating, \$67 85

DISBURSEMENT OF AID TO SOLDIERS AND THEIR FAMILIES.

Under Chap. 79, Sec. 3. of the Revised Laws of Massachusetts.

Paid—

Cornelius Bradford, 29th Reg., Co. E.,	\$16 00
Charles E. Bryant, 3rd Reg., Co. B.,	48 00
Oliver H. Bryant, 3rd Reg., Co. C.,	39 00
George L. Churchill, 4th Reg., Co. I.,	48 00
Cyrus J. Glover, 4th Reg., Co. E.,	8 00
John F. Hartin, 32d Reg., Co. F.,	72 00
Lucas Longendyke, 18th Reg., Co. G.,	72 00
George E. Owens, 47th Reg., Co. H.,	48 00
Isaac L. Sampson, 38th Reg., Co. G.,	33 00
Mary J. Simmons, widow of Wilbur Simmons, 38th Reg., Co. G.,	48 00
William Thayer, 2d Reg., Co. I.,	20 00
William E. Wadsworth, Ship Ino.	48 00
Jairus S. Witherel, 24th Unattached,	48 00
Louise M. Whiting, widow of George W. Whiting, 39th Reg., Co. G.,	48 00
Amount disbursed,	\$596 00

Soldiers' Relief.

Disbursed under Chap. 79, Sections 18-19 of the Revised Laws of Massachusetts.

Paid—

George C. Currier, support of Ida H. Soule, widow of Henry Soule,	\$300 00
Emily H. Roberts, care of Mrs. Soule,	12 00
John Bonney,	120 00
Mary E. Brett, care of John Bonney,	72 00
Mary Bonney, care of John Bonney,	11 25
Dr. Walter D. Shurtleff, attendance upon John Bonney,	22 00
Charles Shupe, wood for John Bonney,	8 00
Amount expended,	\$545 25

SUPPORT OF POOR.

Massachusetts School for Feeble-minded, support of Edward Fitzpatrick and Frank Witherell,	\$52 77
Taunton Insane Hospital, support of Caleb F. Washburn and Hattie E. Cobb,	338 92
Westboro Insane Hospital, support of S. B. Holmes,	169 46
Medfield Insane Asylum, support of S. H. Faunce,	146 00
Town of Hanson, support of family of Eben Churchill,	30 00
City of Boston, support of Rose Corcoran,	8 02
Rose A. Devine, support of Margaret Corcoran,	135 00
Maria Fuller, support of Mary H. Fuller,	312 00
Dr. B. P. Barstow, support of Mary H. Fuller,	22 25
George E. Cushman, support of Mary H. Fuller,	9 54
Steele and Farrington, support of Charles Stranger,	9 85

Ezra S. Wright, support of Charles Stranger,	34 20
Edgar W. Loring, support of Charles Stranger,	13 09
Annie E. Stranger, support of Charles Stranger,	125 00
Chauncey R. Stranger, support of Charles Stranger,	25 00
W. B. Mors, support of Charles Stranger,	1 45
Horatio Adams, support of Charles Stranger,	10 00
Dr. H. M. Jones, support of Charles Stranger,	52 00
Joseph G. Higgins, support of Charles Stranger,	40 00
Kingston Evergreen Cemetery Association, support of Charles Stranger,	5 00
Ezra S. Wright, support of Mrs. Ahearne,	79 53
Philemon W. McLauthlen, support of Mrs. Ahearne,	2 38
William H. Weston, support of Mrs. McDonald and family,	22 56
George E. Cushman, support of Mrs. McDonald and family,	93 92
Dr. B. P. Barstow, support of Mrs. McDonald and family,	39 50
Dr. W. H. Adams, support of William O. Nutter and family,	51 00
Frank L. Chandler, support of William O. Nutter,	134 62
Steele & Farrington, support of William O. Nutter,	64 70
Sarah R. Washburn, support of William O. Nutter,	19 00
Dr. F. Sanft, support of William O. Nutter,	88 00
Ferry W. Shurtleff, support of Mrs. Robert Drew,	116 00
Rebecca Briges, support of Lucy H. Bradford,	257 99
Ellen F. Sampson, support of Lucy H. Bradford,	13 80
Sarah J. Chandler, support of Lucy H. Bradford,	31 75
Dr. W. H. Adams, support of Lucy H. Bradford,	182 50
Joseph G. Higgins, support of Lucy H. Bradford,	35 00
Steele and Farrington, support of family of Wellington E. Kilton,	15 56
Mrs. A. O. Whitmarsh, support of family of Wellington E. Kilton,	10 15
William A. Sampson, support of family of Wellington E. Kilton,	7 41

Dr. B. P. Barstow, support of family of Wellington E. Kilton.	
Whitman, Sparrow & Co., support of family of Wellington E. Kilton.	36 50
Joseph G. Higgins, support of family of Wellington E. Kilton.	30 50
Parris the Grocer, support of family of Frank T. Drake.	35 00
E. S. Wright, support of family of S. James Comeau.	45 00
Dr. B. P. Barstow, support of family of S. James Comeau.	23 96
Mrs. Hanford Sherwood, support of children.	32 50
Isaac T. Reed, support of self and family.	60 00
Dr. B. P. Barstow, support of Archie Tache.	24 00
Alexander Ryan, support of Archie Tache.	53 50
E. S. Merry, support of Archie Tache.	49 00
Frank L. Chandler, support of Frances Dube.	2 43
Dr. B. P. Barstow, support of Frances Dube.	56 94
Everett S. Merry, support of Holloway.	3 00
George E. Cushman, support of Holloway.	14 96
Dr. B. P. Barstow, support of Mrs. McCarty.	21 77
Joseph G. Higgins, burial of Mrs. McCarty.	1 50
Dr. B. P. Barstow, attendance on family of James Bryant.	35 00
John N. Drew, care of tramps.	5 50
Herbert A. Watson, sawing wood for tramps.	6 50
Charles T. Faunce, wood for tramps.	4 00
George E. Cushman, supplies for tramps.	25 00
E. S. Wright, supplies for tramps.	1 39
Dr. W. H. Adams, supplies for tramps.	1 00
Alexander Holmes, sawing wood for tramps.	1 00
J. L. Fairbanks Co., books.	1 50
Walter H. Faunce, cash paid.	11 25
	46 46

Samuel Atwell, cash paid.	10 00
W. F. Coughlan, support of Mary E. Perkins and family.	38 51
Expended,	\$3,482 59

The persons cared for in State Institutions remain the same as last year, and about \$700 has been paid for their support.

Aid granted on account of the sickness, death and burial of Charles F. Stranger, Mrs. Lucy B. Bradford, Mrs. Charles McCarty and Wellington E. Kilton, has increased the expenses nearly \$1,000. A part of this will be reimbursed from the estate of Mrs. Bradford, and a part is due from the town of Duxbury, on account of the family of Kilton, Mrs. Kilton having a settlement in that town by derivation. That which was paid for the support of the family of Archie Tache has been reimbursed by the City of Fall River, and the bills paid on account of the Holloway family are due from the city of Lynn.

The opening of the Alms House again, and the removal there of persons receiving aid, has been discussed by the Overseers of the Poor. The objections to this course are many, and they are reluctant to adopt such a measure unless directed by the town. The conveniences at the house are meagre, and only a small number could be accommodated. It could hardly be made a comfortable home for the elderly ones who are helped, and who do something towards their own support, and the separation of members of families would follow, and mothers and children must part.

Even if a larger establishment were provided and opportunity given to the inmates to aid in their own support, it is a question if results would be at all satisfactory. The purchase of farm and equipments would be but the beginning. Some one or more must be employed to take charge, and as children and the insane are barred out by

state laws, the numbers left would be too small to warrant such an outlay. In general, those who have been helped have been frugal, and have done all that their circumstances would permit to help themselves. There is one case that does not meet with approval. And while the Overseers do not advocate drastic measures, nor condemn and investigate afterwards, as in some recent notorious cases, they have been considering the advisability of taking steps to cause the head of one family to be removed to the State Farm, or to some other similar institution.

The number who need help are always with us. In fact, we all need it in one way or another. It is very clear that the number who ask it is increasing. And it is easy to read between the lines that there is a very large number who are unable to meet the financial obligations, which they owe to the public, who do not ask, but take the help when we find that one-fourth of all the taxes assessed in 1902 were unpaid on the first day of January, 1903, and a sum equal to one-fourth of the whole assessment of 1902 is likewise uncollected.

The Town of Kingston furnishes lodging, mattresses, quilts, wood, candles, matches, crackers, etc. for tramps. According to the experience of years, the greater part of the "Tramp Travellers" are of one and the same nationality. They come around about once in so long a time, appear to have a regular route, which brings them back two or three times a year. As a general thing they are *unmitigated liars*; will be very anxious to get work; have travelled until their money is all gone, etc. Tell them they can stop over night, if they will work two hours, and will be furnished with breakfast, they will appear very thankful; will take all the benefits the Town allows, and before daylight the next morning, they are gone: leaving perhaps, piles of food,

which they have begged on the road. In a longer or shorter time they will come again, declare they have never been in this Town before, etc. Of course there are exceptions. Tramps have been, as a rule, very ragged and dirty, but are now generally well-dressed, about like any laboring man.

They always come late enough to prevent being sent farther, sometimes ringing the keeper out of bed, at eleven o'clock at night, others will get a job at sawing wood, or haying, and will want nothing but a lodging for a night or two, which is always given, in warm weather, as then no fire is required. Owing to limited benefits allowed, they have fallen off in numbers, from six or seven hundred to 82 this last year.

MISCELLANEOUS. *Memorial Day Services.*

Paid—	\$93 00
Martha Sever Post.	

Treasurer and Collector.

Paid—	\$350 00
Henry S. Everson.	

Burying Ground.

Paid—	\$2 75
Estate Levi Ford.	17 00
Nahum Sampson.	30 00
Jonah Willis,	
Expended.	\$49 75

Fisheries.

George H. Boney, auctioneer.	\$ 2 00
Charles Champagne, expert services and expenses,	38 50
L. T. Robbins, lumber,	74 80
Walter H. Faunce, lumber,	24 00

C. Drew & Co., supplies,	3 87
Geo. E. Cushman, supplies,	80
James A. Hickey, labor,	39 49
Carl C. Faunce, labor,	17 50
Chester E. Hammond, labor,	25 00
Elwood B. Chandler,	1 50
Thomas E. Flynn,	5 00
Wendell O. Chandler,	5 00
Expend.	\$237 46

The catch of herrings at the Smelt Brook fishery was sold at auction for \$21 00

Liquor.

Paid—	
Charles S. Davis,	\$10 00
Ellsworth C. Bailey,	45 16
Samuel Atwell,	10 00
Expend	\$65 16

Tree Warden.

Paid—	
Bowker Chemical Co., supplies,	\$75 00
Bowker, Insecticide Co., supplies,	45 00
Joseph Breck & Sons, apparatus,	19 00
Alexander Holmes, spraying trees,	89 50
Chester E. Hammond, spraying trees,	19 80
Carl C. Faunce, spraying trees,	14 40
Daniel Weston, spraying trees,	34 20
George H. Clark, supplies,	70
Jonah Willis, labor,	5 00
Expend.	\$302 60

Fred. C. Adams School Fund.

Paid—	
John W. Cobb, secretary of school committee,	\$309 58

Library.

Paid— Ernest M. Bartlett, treasurer, \$900 00

TOWN HOUSE AND GREEN.

Paid—	\$2 00
Ephraim Pratt, supplies,	3 50
John N. Drew, supplies,	10 50
Charles T. Faunce, wood,	18 37
Philemon W. McLauthlen, wood,	3 00
Alexander Holmes, wood,	5 20
E. S. Wright, oil,	19 08
Edgar W. Loring, coal,	5 38
George E. Cushman, supplies,	15 96
George H. Clark, labor and supplies,	14 88
Whitman, Sparrow & Co., labor and supplies,	3 66
Frank C. Woodward, labor and supplies,	17 65
Caleb E. Bailey, repairing hearse,	33 08
Ellsworth C. Bailey, painting hearse,	15 00
C. Drew & Co., iron work for lockup,	9 80
Charles T. Faunce, labor on lock up,	7 65
L. T. Robbins, lumber for hearse house,	20 15
Walter H. Faunce, lumber for hearse house,	11 25
David Delano, labor on hearse house,	28 00
Samuel Atwell, labor on hearse house,	8 00
Estate Levi Ford, care of the Green,	6 19
Robert E. Cushman, care of the Green,	5 00
Nahum Sampson, repairing walk on the Green,	7 20
David Delano,	7 20
Alphonzo Pratt,	7 20
George E. Owens,	7 20
Philip Smith,	1 80
John Mullaney,	3 60
Charles A. Ransom,	

Stephen Finney,	7 20
Edwin Cook,	2 00
Alfred W. Chandler,	3 60
	<hr/>
	\$310 30

This account has been overdrawn on account of unusual and unexpected demands not likely to be repeated. The building of a cell in the basement of the Town House that our officers might not be obliged to take a prisoner to Plymouth at any time of day or night, and the extension of the small building in the rear, to provide for the storage of the ladders and other equipments of the Tree Warden were of pressing necessity, and were both economical and convenient arrangements. A radical change in the construction of the hearse was also found necessary, and the change was made at an expense of about \$50. The grading of the walk across the Green has been charged to this account.

The house has been opened eighty times for public use during the year. Sixty-nine times, only, have charges been made. There has been received \$178.10 for its use. One hundred and forty-seven dollars and sixty cents has been paid to the janitor for his services, and for cash paid; and \$30.50 has been paid to the Town Treasurer.

It may be good economy to paint the house the coming summer or fall, and if it is to be done, an appropriation of \$300 for that purpose will be necessary.

CONTINGENT ACCOUNT.

Paid—

Samuel Atwell, services as Selectman and Assessor,	\$250 00
David Delano, services as Selectman and Assessor,	250 00
Walter H. Faunce, services as Selectman and Assessor,	
Samuel Atwell, services as Overseer of Poor,	250 00
	25 00

John Drew, services as Overseer of Poor,	50 00
Walter H. Faunce, services as Overseer of Poor,	25 00
Henry S. Everson, services as Town Clerk,	92 49
Fred C. Bailey, services as Registrar of Voters,	20 00
Edwin Cook, services as Registrar of Voters,	20 00
Henry S. Everson, services as Registrar of Voters,	20 00
D. Clifton Freeman, services as Registrar of Voters,	20 00
E. Elbridge Atwood, services as Inspector of Animals,	100 00
Ephraim Pratt, services as Constable,	46 54
Ellsworth C. Bailey, services as Constable,	82 72
Lemuel R. Ford, services as Auditor,	19 20
Henry S. West, services as Watchman,	2 00
William J. O'Brien, services as Watchman,	2 00
Joshua Delano, Jr., services as Watchman,	2 00
Webster L. Thompson, services as Watchman,	2 00
William A. Bumpus, services as Watchman,	2 00
Eugene F. Elder, services as Watchman,	2 00
George H. Clark, services as Teller,	3 00
Charles F. Atwell, services as Teller,	6 00
Amos P. Bradford, services as Teller,	6 00
John W. Cobb, services as Teller,	3 00
Arthur M. Bonney, services as Teller,	3 00
Wm. J. O'Brien, services as Teller,	3 00
Albert E. Holmes, services as Teller,	3 00
Bittinger Bros., printing,	205 00
P. B. Murphy, printing,	5 50
Amos P. Bradford, distributing reports,	1 00
Amos P. Bradford, distributig reports,	2 00
M. Parker Delano, distributing reports,	1 00
Edgar H. Chandler, distributing reports,	1 00
Lester E. Padelford, distributing reports,	1 00
Dr. W. H. Adams, returning births,	7 25
Dr. B. P. Barstow, returning births,	5 75
Dr. H. Molter, returning births,	1 50

Dr. John J. Shaw, returning births,	1 00
Joseph T. Collingwood, court fee,	63
Cattle Commissioners,	1 75
David Delano, cash paid,	10 00
Samuel Atwell, cash paid,	50
N. Y. & Boston Despatch Co., expressage,	6 35
Philander Cobb, 2d.,	1 00
Charles H. Childs, injury on highway,	20 00
	<hr/>
	\$1,587 18

ICHABOD WASHBURN FUND.

The report of the Trustees for the year ending March, 1902, which is on file in the office of the Selectmen, shows that the income of said fund has been distributed as required by the will.

LIST OF JURORS.

The following list is prepared for consideration at the annual March meeting:

Adams, Charles H.
 Bailey, Frederick C.
 Baker, Walter
 Barstow, Daniel W.
 Berry, Roscoe G.
 Bird, Edward E.
 Callahan, Michael T.
 Chandler, Elbridge E.
 Chandler, Fred C.
 Clemons, Joseph W.
 Cobb, John W.
 Delano, David

Delano, Joseph, Jr.
 Everson Henry S.
 Ford-Levi E.
 Foster, H. Waldo
 Geel, Benjamin H.
 Holmes, Alexander
 McLaughlin, Philemon W.
 Reidel, Robert
 Savery, Winsor T.
 Soule, Harvey A.
 Stranger, Chauncy
 Weston, Daniel
 Wilbur, Charles C.
 Woodward, Frank C.

RECOMMENDATIONS.

The following recommendations are submitted:

Contingent account,	\$1,600 00
Support of Poor,	3,000 00
Teachers' wages,	4,900 00
School Books,	600 00
Fuel and care,	1,000 00
Repairs,	800 00
Incidentals,	225 00
Music,	300 00
Drawing,	250 00
Conveyance,	375 00
Superintendent,	600 00
Highways,	3,500 00
Special highway,	500 00
State aid,	600 00
Soldiers' relief,	550 00
Memorial Day services,	100 00

Care of burying ground.	100 00
Tree Warden.	200 00
Water Department.	800 00
Water bonds, notes and interest.	3,000 00
Fire Department.	600 00
Town House.	350 00
Suppression of sale of Liquor.	150 00
Treasurer and collector.	400 00
Public Library.	900 00

Taking the foregoing recommendations as a basis for computation and allow that the receipts into the treasury from various sources, that remain as a part of the common fund, will amount to \$9,400.00 and there will be \$16,000.00 to raise by tax. Our County tax will be not less than \$500.00 more than last year and the tax levy therefore of this town will be about \$1,500.00 more. The rate will be increased \$1.00 per thousand, or \$13.00 on each thousand of valuation, provided the Assessors' valuation and our proportion of the State tax remain the same.

The balance in the treasury at the beginning of the year is unusually small and the Treasurer will be obliged to hire at an early day. Two hundred and thirty-five dollars was paid for interest on temporary loans in the year just past, and there is a likelihood that higher rates must be paid during the year to come.

To allow this to go on when there is a list of \$3,500 uncollected taxes returned on the last day of the year is unjust to those who promptly pay.

WALTER H. FAUNCE.

SAMUEL ATWELL.

DAVID DELANO.

Selectmen of Kingston.

SAMUEL ATWELL.

WALTER H. FAUNCE.

JOHN N. DREW.

Overseers of the Poor of Kingston.

TAXES.

	POLL.	PERSONAL.	REAL.	TOTAL.
Adams, Charles H.,	\$2.00	\$39.00	\$26.40	\$67.40
Adams, Harriet		42.00	35.10	77.10
Adams, Horatio	2.00	201.30	523 20	726.50
Adams, Horatio, guardian of Christiana Hall		24.00		24.00
Adams, Horatio, guardian of Josephine Holmes			.60	.60
Adams, Wendell H.	2.00	5.40	45.00	52.40
Anderson, August.	2.00		9.60	11.60
Anthony, George	2.00			2.00
Anziluthe Jacob	2.00			2.00
Atwell, Charles F.	2.00	.60	23.10	25.70
Atwell, Samuel	2.00	6.00		8.00
Atwood, E. Elbridge	2.00	11.70	89.40	103.10
Atwood, Herbert H.	2.00	.60	7.80	10.40
Austin, Samuel	2.00			2.00
Avery, Charles	4.00			4.00
Avery, William	2.00			2.00
Ayer, Eugene G.	2.00	15.90	69.90	87.80
Bagnell, John C.	2.00		23.10	25.10
Bailey, Caleb E.	2.00	12.00	46.80	60.80
Bailey, Ellsworth C.	2.00	2.40	9.60	14.00
Bailey, Fred C.	2.00		29.40	31.40
Bailey, George E.	2.00			2.00
Bailey, Helen M.			16.20	16.20
Bailey, Justus A.	2.00		19.20	21.20
Bailey, Sally W.			22.20	22.20
Bailey, Thomas W.	2.00			2.00

	POLL.	PERSONAL	REAL	TOTAL
Bailey, Herbert W.	2.00			2.00
Bain, David	2.00			2.00
Bain, James	2.00			2.00
Bain, Robert	2.00			2.00
Baker, Chester A.	2.00	18.60	13.80	20.60
Baker, Edgar A.	2.00		27.60	29.60
Baker, Henry P.	2.00			2.00
Baker, Thatcher	4.00	2.70	31.80	38.50
Baker, Walter	2.00	1.20	21.60	24.80
Baldner, Abraham F.	2.00			2.00
Bancroft, George P.	2.00			2.00
Barker, Edward T.			18.00	18.00
Barker, Henry L.	2.00	1.20		3.20
Barnes, John	2.00			2.00
Barstow, Benjamin P.	2.00	5.40	55.20	62.60
Barstow, Daniel W.	2.00		13.20	15.20
Bartz, Louis F.	2.00			2.00
Basler, John	2.00	1.50	15.60	19.10
Basler, Peter	2.00			2.00
Basler, Phillip	2.00		15.60	17.60
Basler, Phillip, Jr.	2.00			2.00
Bartlett, Clement D.	2.00		3.00	5.00
Bartlett, Ernest M.	2.00			2.00
Bartlett, Hattie M.			57.60	57.60
Bartlett, Susan A.			22.80	22.80
Bates, Andrew W.	2.00			2.00
Bates, Caleb, Heirs of			25.80	25.80
Bates, C. Maskell	2.00			2.00
Bates, Louis E.	2.00	1.20		3.20
Benson, Edmond W.	2.00			2.00
Benson, Levi W.	2.00		24.00	26.00
Berry, Edmond	2.00			2.00
Berry, Roscoe E.	2.00		.60	2.60
Berry, Roscoe G.	2.00		10.80	12.80
Bytes, Nancy, Heirs of			6.00	6.00

	POLL.	PERSONAL	REAL	TOTAL
Bicknell, Henry S.	2.00			2.00
Bird, Edward E.	2.00			2.00
Bisbee, Daniel	2.00		12.00	14.00
Bisbee, Daniel, Heirs of			1.80	1.80
Blanchard, Harriet N.			6.00	6.00
Blanchard, Henry N.	2.00	1.20	3.60	6.80
Blanchard, Herbert A.	2.00		3.60	5.60
Bomrilla, Moses	2.00			2.00
Bonney, Arthur M.	2.00			2.00
Bonney, Charles F. A.	2.00	3.60	9.60	15.20
Bonney, George H.	2.00		7.92	9.92
Bonney, James F.	2.00			2.00
Bonney, Wallace	2.00		16.80	18.80
Bonney, Wilfred	2.00			2.00
Boop, Jacob	2.00	1.50	24.00	27.50
Boudrot, Alexander	2.00			2.00
Bouse, Jacob	2.00		15.60	17.60
Bowker, Davis W.	2.00	3.00	.60	5.60
Brackett, Fred G.	2.00	38.10	42.00	82.10
Bradford, Alden S., heirs of			27.60	27.60
Bradford, Amos P.	2.00			2.00
Bradford, Edmond	2.00	1.20	13.20	16.40
Bradford, Sumner	2.00			2.00
Breach, Henry F.	2.00			2.00
Brewster, Ernest E. W.	2.00			2.00
Brockton & Plymouth St. Ry Co.			7.20	7.20
Brooks, Edwin	2.00			2.00
Brown, Alfred	2.00			2.00
Brown, Alfred C.	2.00			2.00
Brown, David			37.80	37.80
Brown, Edward G.	2.00	2.40	43.80	48.20
Brown, Russell B.	2.00			2.00
Brown, William M.	2.00		24.00	26.00
Bryant, Charles E.	2.00	.60	7.20	9.80

	POLL.	PERSONAL.	REAL.	TOTAL.
Bryant, Edgar W.	2.00			2.00
Bryant, Frank L.	2.00	.90	5.40	8.30
Bryant, George B.	2.00		8.40	10.40
Bryant, George W.	2.00	3.00	1.32	6.32
Bryant, Lewis D.	2.00			2.00
Bryant, Nathaniel			12.00	12.00
Bryant, Oliver H.			.90	.90
Bryant, Peleg, heirs of			12.00	12.00
Bryant, Sylvanus			17.70	17.70
Bryant, Warren L.	2.00	2.40		4.40
Bryant, William B.	2.00		.60	2.60
Bunker, Esther A.			3.60	3.60
Bunker, George C.	2.00		.60	2.60
Bumpus, William A.	2.00		14.40	16.40
Burbeck, Edward	2.00			2.00
Butler, James	2.00	12.00	26.40	40.40
Callahan, James	2.00		12.00	14.00
Callahan, Michael T.	2.00	.60	19.20	21.80
Cameron, Robert	2.00			2.00
Cantori, Raphael	2.00	4.20	6.00	12.20
Carey, Dennis	2.00	1.20		3.20
Carey, James	2.00			2.00
Carey, John P.	2.00		13.80	15.80
Carrow, Frank	2.00			2.00
Carrow, Joseph	2.00		20.40	22.40
Carrow, Joseph, Jr.	2.00			2.00
Carrow, William	2.00			2.00
Caspar, Jacob	2.00	.60		2.60
Center, John S.	2.00		4.80	6.80
Chandler, Alfred W.	2.00		15.00	17.00
Chandler, Algernon S.	2.00	12.00	115.80	129.80
Chandler, Claude M.	2.00		16.80	18.80
Chandler, Ellbridge H.	2.00	38.40	34.20	74.60
Chandler, Elwood B.	2.00	21.00		23.00
Chandler, Frank E.	2.00	1.20		3.20

	POLL.	PERSONAL.	REAL.	TOTAL.
Chandler, Frank L.	2.00	26.70		28.70
Chandler, Fred C.	2.00		.30	2.30
Chandler, George F.	2.00	1.20	10.80	14.00
Chandler, George T.	2.00		16.80	18.80
Chandler, Horace J.	2.00	3.00	21.60	26.60
Chandler, John F.	2.00	1.20	8.40	11.60
Chandler, John S.	2.00	.30	11.40	13.70
Chandler, Wendell O.	2.00			2.00
Childs, Charles H.	2.00	1.80	22.20	26.00
Churchill, Alton	2.00			2.00
Churchill, George L.	2.00	1.20	5.10	8.30
Churchill, Henry	2.00	6.00	35.10	43.10
Churchill, Herbert	2.00			2.00
Churchill, Otis	2.00	.60	17.70	20.30
Clark, George H.	2.00	6.00	38.40	46.40
Clark, George Herbert	2.00	1.80	26.40	30.20
Clemons, Harry W.	2.00			2.00
Clemons, Joseph W.	2.00	5.40	15.00	22.40
Clinch, Matthew	2.00			2.00
Cobb, Henry, heirs of			21.90	21.90
Cobb & Drew		774.00	156.00	930.00
Cobb, Herbert W.	2.00		25.20	27.20
Cobb, John W.	2.00			2.00
Cobb, Marcia R.			21.60	21.60
Cobb, Philander			11.70	11.70
Cobb, Philander, 2d	2.00	1.20		3.20
Cobb, Rebecca S.			24.60	24.60
Cole, Ann E.		6.00	29.40	35.40
Cole, Charles	2.00	2.40	30.00	34.40
Cole, Frank L.	2.00	1.80	4.20	8.00
Cole, Horace C.	2.00	1.20	24.00	27.20
Cole, H. C. & W. S.		51.60	3.00	54.60
Cole, Leander	2.00			2.00
Cole, Rosa		326.40	147.00	473.40
Cole, Samuel P., heirs of			24.90	24.90

	TOLL.	PERSONAL.	REAL.	TOTAL.
Cole, Waldo S.	2.00	2.40	43.80	48.20
Collins, Laurence	2.00		20.40	22.40
Comeau, James S.	2.00		7.20	9.20
Cook, Edwin	2.00		14.70	16.70
Cook, Fred W.	2.00	.90	8.40	11.30
Cook, Henry T.	2.00	4.50	19.50	26.00
Cook, Josiah	4.00	1.80		5.80
Corey, Gustavus			19.80	19.80
Cummings, William	2.00			2.00
Cunningham, Hamah, heirs of			46.20	46.20
Cunningham, T. Bliss			52.80	52.80
Cushing, Winslow	2.00	12.00		14.00
Cushman, Briggs	2.00	1.20		3.20
Cushman, Daniel		.30	6.00	6.30
Cushman, Fred L.	2.00	1.20	13.50	16.70
Cushman, George			12.00	12.00
Cushman, Joseph S., heirs of			.60	.60
Cushman, George E.	2.00	66.00	102.60	170.60
Cushman, Geo. E., trustee		18.00	28.20	46.20
Cushman, James H.		.90	8.58	9.48
Cushman, Lyman T.	2.00			2.00
Darey, James W.	2.00		13.80	15.80
Davie, Solomon	2.00	1.20	25.20	28.40
Davis, Charles H.	2.00	3.30		5.30
Dawes, James H.	2.00	7.80	49.20	59.00
Dawes, John C.	2.00	1.20	86.10	89.30
Delano, Charles C.	2.00			2.00
Delano, David	2.00	.60	28.80	31.40
Delano, John H.	2.00			2.00
Delano, Joshua		32.70	121.50	154.20
Delano, Joshua, Jr.	2.00	6.00		8.00
Delano, Leander S.	2.00	2.40		4.40
Delano, Lewis, heirs of			19.20	19.20

	TOLL.	PERSONAL.	REAL.	TOTAL.
Delano, M. Parker	2.00			2.00
DeMar, John A.	2.00			2.00
DeMar, Elizabeth E.		1.80	18.00	19.80
DeNormandie, Court- land Y.	2.00		27.60	29.60
Devine, Arthur	2.00			2.00
Devine, John C.	2.00		2.40	4.40
Devine, Mary A.		1.80	18.00	19.80
Devine, Richard T.	2.00			2.00
Dexter, Wilfred S.	2.00			2.00
Donley, James	2.00		4.20	6.20
Douglass, Truman H.	2.00			2.00
Doubay, Joseph	2.00		2.40	4.40
Doubay, Peter	2.00	.30	3.60	5.90
Drake, Ella B.			34.20	34.20
Drew, C. & Co.		48.00	55.20	103.20
Drew, Charles H.	2.00	1.80	17.40	21.20
Drew, Christopher P.		12.30	33.60	45.90
Drew, Eli C., heirs of		.30	36.30	36.60
Drew, John I.	2.00		.30	2.30
Drew, John N.	2.00		14.40	16.40
Drew, Lester B.	2.00			2.00
Drew, Nellie			10.80	10.80
Dries, Henry	2.00		12.30	14.30
Dunbar, Harold E.	2.00			2.00
Dunbar, Ruel W.	2.00	3.00	12.96	17.96
Dunnell, Wendell H.	2.00			2.00
Eager, Robert	2.00		15.30	17.30
Elder, Eugene F.	2.00		12.00	14.00
Emond, Arthur	2.00	8.40	24.60	35.00
Emond, Napoleon	2.00			2.00
Evans, Green	2.00		31.32	33.32
Evans, Willis	2.00		19.80	21.80
Everson, Henry S.	2.00	1.80	16.20	20.00
Everson, Warren N.			14.10	14.10

	POLL.	PERSONAL.	REAL.	TOTAL.
Farrington, John B.	2.00		9.00	11.00
Farrington, John P.	2.00	12.00		14.00
Faulkner, James N.	2.00		31.20	33.20
Faunce, Carl C.	2.00		.30	2.30
Faunce, Charles T.	2.00	1.20	34.80	38.00
Faunce, Eliezer	2.00	.60	17.40	20.00
Faunce, Myron	2.00			2.00
Faunce, George, heirs of		1.20	18.00	19.20
Faunce, Sarah			5.40	5.40
Faunce, Walter H.	2.00	105.90	59.70	167.60
Finney, Rebecca			37.20	37.20
Finney, Stephen	2.00	1.20	7.20	10.40
Flinn, Thomas E.	2.00	.60		2.60
Foley, Frank	2.00			2.00
Ford, Ellis B.	2.00			2.00
Ford, Lemuel R.	4.00	.36	26.10	30.46
Ford, Levi			27.60	27.60
Ford, Levi E.	2.00	.60	36.00	38.60
Ford, L. E. & Co.		48.00		48.00
Ford, Murcer W.	2.00		39.90	41.90
Foster, H. Waldo	2.00		21.60	23.60
Foster, Lewis S.	2.00	.90	6.60	9.50
Freeman, D. Clifton	2.00		14.40	16.40
Freeman, Henry J.	2.00			2.00
Frost, Pliny	2.00			2.00
Fuller, Chester H.	2.00		16.20	18.20
Fuller, Truman H.	2.00		54.60	56.60
Gasser, Antoine, heirs of			.60	.60
Geel, Benjamin H.	2.00	3.00	18.00	23.00
Gegne, Arthur	2.00	.30	2.40	4.70
Gilbert, Joseph	2.00	.78	2.10	4.88
Gilpin, Joseph	2.00		14.40	16.40
Guitano, Christopher	2.00	.60	15.00	17.60
Glass, Arthur M.	2.00	.90	4.20	7.10

	POLL.	PERSONAL.	REAL.	TOTAL.
Glass, William F.	2.00			2.00
Glover, Elizabeth F.			24.60	24.60
Gorham, Allen R.	2.00		14.40	16.40
Graves, George A.	2.00		12.60	14.60
Gray, Francis L., heirs of			1.20	1.20
Gray, John, heirs of			24.60	24.60
Gray, Samuel W.	2.00		.60	2.60
Groat, George, Jr.	2.00			2.00
Grozinger, Andrew	2.00			2.00
Grozinger, George, est. of		1.20	17.40	18.60
Grozinger, John W.	2.00			2.00
Haggerty, William, heirs of			13.80	13.80
Hall, Fred A.	2.00			2.00
Hall, Henry	2.00		11.40	13.40
Hall, James L.	2.00	1.20	66.60	69.80
Hall, John F.	2.00	24.60	69.30	95.90
Hall, William C., heirs of			22.80	22.80
Hammond, Asa C.	2.00	3.00	23.10	28.10
Hammond, Chester E.	2.00			2.00
Hammond, James C.			11.40	11.40
Hammond, Lester C.	2.00			2.00
Hammond, Walter C.	4.00	1.80	102.00	107.80
Hauf, James W.	2.00			2.00
Hauf, William D.	2.00			2.00
Hansche, Otto	2.00			2.00
Harding, George	2.00			2.00
Harlow, Marcus	2.00			2.00
Hart, David	2.00			2.00
Hart, Dennis	2.00		13.20	15.20
Hart, Fred W.	2.00			2.00
Hartman, John	2.00	2.40	12.00	16.40
Haskins, Herman	2.00			2.00

	POLL.	PERSONAL	REAL	TOTAL
Haskins, Washington C.	2.00			2.00
Hastings, George W.	2.00			2.00
Hatch, Charles W.	2.00		23.40	25.40
Hatch, Franklin W.	2.00			2.00
Havey, George W.		.30	16.20	16.50
Hayes, Joseph J.	2.00			2.00
Henderson, James	2.00	1.50	16.80	20.30
Henry, Eugene	2.00			2.00
Hernandez, Fred A.	2.00		1.20	3.20
Hernandez, Jose	2.00	.30	1.50	3.80
Hickey, James	2.00		16.80	18.80
Hickey, James A.	2.00			2.00
Hickey, John W.	2.00			2.00
Higgins, Joseph G.	2.00	3.00		5.00
Hill, Frank C.	2.00			2.00
Holman, Edward F.	2.00	13.20		15.20
Holman, Myron	2.00			2.00
Holman, William	2.00			2.00
Holmes, Albert E.	2.00		16.80	18.80
Holmes, Alexander	2.00	112.80	163.80	278.60
Holmes, Arthur B.	2.00	156.90	87.60	246.50
Holmes, Clythia D.		240.90	111.00	351.90
Holmes, Elnathan S.	2.00		21.60	23.60
Holmes, George B.	2.00	.30	25.20	27.50
Holmes, Helen		158.40	25.80	184.20
Holmes, Horace	2.00	5.70	81.60	89.30
Holmes, Joseph	2.00		6.30	8.30
Holmes, Joseph A.	2.00	788.10	332.40	1,122.50
Holmes, Joseph A., trustee		34.20	81.60	115.80
Holmes, Roger C.	2.00		28.20	30.20
Howe, Caroline F.			19.20	19.20
Howe, Lucy H.		6.00	18.90	24.90
Houghton, Walter L.	2.00			2.00

	POLL.	PERSONAL	REAL	TOTAL
Howland, Charles F.	2.00	.60	9.00	11.60
Hunt, Sylvia W.		126.00	36.00	162.00
I. O. O. F. Adams Lodge			30.00	30.00
Jones, Helen M.			18.90	18.90
Jones, Henry M.	2.00	187.20	20.70	209.90
Jones, Henry N.		3.60	80.40	84.00
Jones, Leander L.	2.00			2.00
Keeley, Hannah			22.80	22.80
Keene, Francis W.	2.00	.60		2.60
Keevey, Everett P.	2.00			2.00
Keith, Henry K.			98.40	98.40
Keith, Lewis H.	2.00	13.80	108.00	123.80
Keith, William C.	2.00			2.00
Keith & Adams			19.20	19.20
Kelley, Orrick	2.00		1.80	3.80
Kelliher, Thomas	2.00			2.00
Kempton, Alvan	2.00			2.00
Kennedy, Allen	2.00			2.00
Kennedy, Frank M.	2.00		11.40	13.40
Kennedy, James	2.00		9.60	11.60
Kennedy, Mary and sister		4.20	60.60	64.80
King, Fred	2.00			2.00
Koshman, Oscar	2.00		17.70	19.70
Kriegle, Nicholas	2.00			2.00
Krueger, Rudolph	2.00		13.80	15.80
Lane, George F.	2.00	14.40	52.80	69.20
Lanman, Ellen A.		.60	15.00	15.60
Lanman, Henry T., heirs of			24.00	24.00
Lanman, Ruth			13.20	13.20
Lanman, Mary E.			22.80	22.80
Lanman, Wallace N.	2.00			2.00
Lapham, Albert	2.00	1.20	18.60	21.80
Lapham, Charles	2.00	1.80	31.20	35.00

	POLL.	PERSONAL.	REAL.	TOTAL.
Haskins, Washing- ton C.	2.00			2.00
Hastings, George W.	2.00			2.00
Hatch, Charles W.	2.00		23.40	25.40
Hatch, Franklin W.	2.00			2.00
Havey, George W.		.30	16.20	16.50
Hayes, Joseph J.	2.00			2.00
Henderson, James	2.00	1.50	16.80	20.30
Henry, Eugene	2.00			2.00
Hernandez, Fred A.	2.00		1.20	3.20
Hernandez, Jose	2.00	.30	1.50	3.80
Hickey, James	2.00		16.80	18.80
Hickey, James A.	2.00			2.00
Hickey, John W.	2.00			2.00
Higgins, Joseph G.	2.00	3.00		5.00
Hill, Frank C.	2.00			2.00
Holman, Edward F.	2.00	13.20		15.20
Holman, Myron	2.00			2.00
Holman, William	2.00			2.00
Holmes, Albert E.	2.00		16.80	18.80
Holmes, Alexander	2.00	112.80	163.80	278.60
Holmes, Arthur B.	2.00	156.90	87.60	246.50
Holmes, Clynthia D.		240.90	111.00	351.90
Holmes, Elnathan S.	2.00		21.60	23.60
Holmes, George B.	2.00	.30	25.20	27.50
Holmes, Helen		158.40	25.80	184.20
Holmes, Horace	2.00	5.70	81.60	89.30
Holmes, Joseph	2.00		6.30	8.30
Holmes, Joseph A.	2.00	788.10	332.40	1,122.50
Holmes, Joseph A., trustee		34.20	81.60	115.80
Holmes, Roger C.	2.00		28.20	30.20
Howe, Caroline F.			19.20	19.20
Howe, Lucy H.		6.00	18.90	24.90
Houghton, Walter L.	2.00			2.00

	POLL.	PERSONAL.	REAL.	TOTAL.
Howland, Charles F.	2.00	.60	9.00	11.60
Hunt, Sylvia W.		126.00	36.00	162.00
I. O. O. F. Adams Lodge			30.00	30.00
Jones, Helen M.			18.90	18.90
Jones, Henry M.	2.00	187.20	20.70	209.90
Jones, Henry N.		3.60	80.40	84.00
Jones, Leander L.	2.00			2.00
Keeley, Hannah			22.80	22.80
Keene, Francis W.	2.00	.60		2.60
Keevey, Everett P.	2.00			2.00
Keith, Henry K.			98.40	98.40
Keith, Lewis H.	2.00	13.80	108.00	123.80
Keith, William C.	2.00			2.00
Keith & Adams			19.20	19.20
Kelley, Orrick	2.00		1.80	3.80
Kelliher, Thomas	2.00			2.00
Kempton, Alvan	2.00			2.00
Kennedy, Allen	2.00			2.00
Kennedy, Frank M.	2.00		11.40	13.40
Kennedy, James	2.00		9.60	11.60
Kennedy, Mary and sister		4.20	60.60	64.80
King, Fred	2.00			2.00
Koshman, Oscar	2.00		17.70	19.70
Kriegle, Nicholas	2.00			2.00
Krueger, Rudolph	2.00		13.80	15.80
Lane, George F.	2.00	14.40	52.80	69.20
Lanman, Ellen A.		.60	15.00	15.60
Lanman, Henry T., heirs of			24.00	24.00
Lanman, Ruth			13.20	13.20
Lanman, Mary E.			22.80	22.80
Lanman, Wallace N.	2.00			2.00
Lapham, Albert	2.00	1.20	18.60	21.80
Lapham, Charles	2.00	1.80	31.20	35.00

	POLL.	PERSONAL.	REAL.	TOTAL.
Lapham, Fred E.	2.00			2.00
Lapham, Oscar	2.00			
Lapham, Foundry Co.		12.00	17.40	28.80
Laury, Charles A.	2.00		14.40	16.40
Leidlöff, William F. G.	2.00		14.40	16.40
Linzee, John W., Jr.		1.80	27.60	29.40
Lobdell, George G.	2.00	.60	12.60	15.20
Loring, Edgar W.	2.00	6.30	1.20	9.50
Lovering, Judith A.			15.60	15.60
Low, Charles E.	2.00			2.00
Low, Serena			6.00	6.00
Lowe, Claude A.	2.00			2.00
Lowe, George S.	2.00	3.00	20.40	25.40
Lubke, Edward F.	2.00			2.00
Maglathlin, Henry B.	2.00	12.00	55.20	69.20
Mahoney, John	2.00		12.60	23.60
Malone, Eugene	2.00			2.00
Malone, James T.	2.00			2.00
Malone, John	2.00			2.00
Malone, Michael H.	2.00			2.00
Malone, Patrick T.	2.00			2.00
Malone, William H.	2.00			2.00
Mange, Winthrop H.	2.00			2.00
Matthews, Thomas	2.00			2.00
Maynard, Alfred H.	2.00			2.00
McCarthy, Charles	2.00			2.00
McCrane, James	2.00		7.20	9.20
McDonald, Allen	2.00		12.30	14.30
McDonald, John R.	2.00			2.00
MacDonald, John C.	2.00		7.20	9.20
McGrath, Michael	2.00	.60	19.20	21.80
McGrath, Michael H.	2.00			2.00
McGrath, Robert, heirs of			15.00	15.00

	POLL.	PERSONAL.	REAL.	TOTAL.
McGrath, Thomas			9.60	9.60
McGuire, William	2.00		8.40	10.40
McLauthlen, Amelia W.			21.00	21.00
McLauthlen, Edwin L.	2.00	25.20	49.80	77.00
McLauthlen, Fanny B. and sister			3.60	3.60
McLauthlen, Frances A.			35.40	35.40
McLauthlen, Frank W.	2.00		19.80	21.80
McLauthlen, F. W. & Co.		58.80	22.20	81.00
McLauthlen, Fred B.	2.00		17.40	19.40
McLauthlen, Geo. W.	2.00			2.00
McLauthlen, Horace B.	2.00	57.60	55.80	115.40
McLauthlen, Onslow	2.00	2.10	28.50	32.60
McLauthlen, Peter W. heirs of			15.00	15.00
McLauthlen, Philemon W.	2.00	7.20	73.50	82.70
McLauthlen, Wallace			4.80	4.80
McLennon, John	2.00			2.00
McManus, Charles	2.00			2.00
McManus, Terrence	2.00		6.00	2.60
McManus, Michael, heirs of			6.00	6.00
Merry, Everett S.	2.00	2.40	24.00	28.40
Merrill, Clarence E.	2.00			2.00
Metz, Joseph	2.00		8.40	10.40
Miller, Antoine	2.00			2.00
Miller, Edgar H.	2.00			2.00
Miller, George	2.00	.60	7.20	9.80
Miller, Jacob	2.00	.60	15.60	18.20
Monks, Charles L.	2.00		7.80	9.80
Monks, John	2.00		30.00	32.00
Moran, John	2.00			2.00

	POLL.	PERSONAL.	REAL.	TOTAL.
Morey, Charles S.	2.00		18.60	20.60
Mullaney, James	2.00			2.00
Mullaney, John	2.00			2.00
Mullaney, Lewis	2.00			2.00
Murray, John	2.00		6.00	8.00
Muti, Louis	2.00		9.60	11.60
Myrick, William H.	2.00	30.00	69.60	101.60
Myrick, William W.	2.00	7.20	78.00	87.20
National Tack Co.		25.20		25.20
Newcomb, Alice			38.40	38.40
Nichols, Elizabeth		12.00	26.40	38.40
Nickodemus, John	2.00		12.60	14.60
Noyes, William O.	2.00		4.80	6.80
Oakley, Charles F.	2.00	1.80		3.80
O'Brien, Eugene	2.00			2.00
O'Brien, John			10.20	10.20
O'Brien, Joseph	2.00			2.00
O'Brien, Patrick	2.00		11.40	13.40
O'Brien, William J.	2.00			2.00
Odette, Joseph	2.00			2.00
Ormonde, John	2.00			2.00
Ormonde, Michael	4.00	1.20	15.60	20.80
O'Rourke, Catharine			6.00	6.00
Owens, George E.	2.00	1.20	6.60	9.80
Padelford, Enoch W.	2.00	1.80	18.00	21.80
Padelford, Theodore	4.00		28.20	32.20
Page, Marion		36.00	43.20	79.20
Palmer, Herbert B.	2.00		12.00	14.00
Parent, Michael	2.00	.90	3.00	5.90
Patrick, Wilfred	2.00			2.00
Patrie, Peter	2.00	.30	6.60	8.90
Peck, John	2.00		18.00	20.00
Peck, John, 2d	2.00		8.40	10.40
Peck, Julius	2.00			2.00

	POLL.	PERSONAL.	REAL.	TOTAL.
Peckham, Mary H.		60.00	27.60	87.60
Pendergast, Edward	4.00		18.00	22.00
Pierce, Arthur W.	2.00		18.60	20.60
Pierce, James B.	2.00		13.20	15.20
Plympton, Ebenezer		1.80	23.40	25.20
Porter, Frank	2.00			2.00
Plymouth Savings Bank,			12.60	12.60
Potter, William	2.00		15.00	17.00
Pratt, Alphonzo	4.00	.60	25.20	29.80
Pratt, Bernard C.	2.00	1.20		3.20
Pratt, Ephraim	2.00		1.50	3.50
Pratt, Eulalie, heirs of			14.10	14.10
Pratt, Galen E.	2.00			2.00
Prouty, George C.	2.00	1.20		3.20
Quinby, Byron C.	2.00	84.00		86.00
Quinn, Edward	2.00			2.00
Quinn, John	2.00	4.80	43.80	50.60
Randall, Arthur R.	2.00			2.00
Randall, Edward A.	2.00	.90	10.20	13.10
Randall, Jason L.	2.00	1.80		3.80
Randall, John T.	2.00		16.80	18.80
Randall, Robert F.	2.00	.90	10.20	13.10
Ransom, Charles A.	2.00	1.20		3.20
Ransom, Edward A.	2.00		14.40	16.40
Raymond, Adoniram J.	2.00		9.60	11.60
Raymond, George L.	2.00			2.00
Raymond, Leander	2.00			2.00
Reckenbiel, Henry	2.00		15.00	17.00
Reckenbiel, Henry	2.00		15.00	17.00
Reed, Adelaide			6.00	6.00
Reed, Arthur A.	2.00		5.40	7.40
Reed, Porter C.	2.00		19.20	21.20
Reidel, Robert	2.00		13.20	15.20

	POLL.	PERSONAL.	REAL.	TOTAL.
Reinhardt, Elizabeth H.			21.60	21.60
Reinhardt, Henry	2.00		14.40	16.40
Reinhardt, John	2.00		12.00	14.00
Reinhardt, Louis	2.00		18.00	20.00
Ring, Daniel W.	2.00	18.00	17.40	37.40
Ring, Samuel, heirs of			13.50	13.50
Ripley, Emily A.			35.40	35.40
Ripley, Henry L.			36.60	36.60
Ripley, Obed	2.00	1.20	20.40	23.60
Robbins, Joseph S., heirs of			28.20	28.20
Robischau, Joseph	2.00	.30		2.30
Rogerson, Philip S.	2.00	1.20	10.80	14.00
Rudolph, Frederic	2.00	.30	11.40	13.70
Rudolph, Jacob	2.00	.60	4.20	6.80
Rudolph, William	2.00		12.00	14.00
Rushon, Howard L.	2.00		22.80	24.80
Russell, Catherine D.			16.20	16.20
Ryan, Alexander	2.00		10.20	12.20
Ryan, Michael J.	2.00		10.80	12.80
Ryder, Howard L.	2.00	1.20		3.20
Sampson, Abel T.	2.00			2.00
Sampson, Azel H., est. of		7.20	10.80	18.00
Sampson, Elizabeth B.		102.00		102.00
Sampson, Henry H.	2.00	132.00		134.00
Sampson, Isaac L.	2.00			2.00
Sampson, Julia H.		174.00	28.80	202.80
Sampson, Martin	2.00			2.00
Sampson, Nahum	2.00		14.40	16.40
Sampson, Seavey B.	2.00		6.60	8.60
Sampson, William A.	2.00		6.00	8.00
Sargent, James W.	2.00	1.20	16.80	20.00
Savery, Winsor T.	2.00			2.00

	POLL.	PERSONAL.	REAL.	TOTAL.
Schaefer, Charles	2.00	1.20	21.60	24.80
Schilling, Gottfried	2.00	1.80	8.40	12.20
Seaver, Michael	2.00	.30	9.60	11.90
Schmidt, John	2.00		11.40	13.40
Schmidt, John, Jr.	2.00			2.00
Shelley, Henry T.	2.00			2.00
Sheppard, William	2.00		8.10	10.10
Sherman, Edwin I.	2.00	1.80		3.80
Sherman, Harry B.	2.00			2.00
Shiverick, George W.	2.00	3.00	4.80	9.80
Siebenschu, Robert H.	2.00		15.90	17.90
Siebenschu, William	2.00		1.50	3.50
Siebenschu, Brothers		6.60		6.60
Simmons, Augustus	2.00	.60	13.44	16.04
Simmons, Fred M.	2.00			2.00
Simmons, Helen A.			37.80	37.80
Simmons, Hannah, est. of			4.80	4.80
Simmons, Martin	2.00			2.00
Simmons, Minnie			27.60	27.60
Simmons, Wendell	2.00	.60	13.20	15.80
Skakle, John A.	2.00		21.60	23.60
Small, Stillman B.	2.00	2.40	21.00	25.40
Smith, Adam	2.00	.60	40.20	42.80
Smith, Arthur W.	2.00			2.00
Smith, John, heirs of			15.60	15.60
Smith, John T.	2.00	18.00		20.00
Smith, Martin	2.00		12.00	14.00
Smith, Patrick W.	2.00	1.20	7.80	11.00
Smith, Philip	2.00	1.20	5.40	8.60
Smith, Richard J.	2.00		7.20	9.20
Smith, William	2.00	.60		2.60
Society 1st Cong'l			9.90	9.90
Society, 2d Cong'l			30.00	30.00
Society, Baptist			14.40	14.40

	POLL.	PERSONAL.	REAL.	TOTAL.
Soule, Abby A.		6.00	50.40	56.40
Soule, Harvey A.	2.00			2.00
Soule, Herbert	2.00			2.00
Soule, James C.	2.00			2.00
Soule, William A.	2.00			2.00
Sprague, N. D. W.	2.00			2.00
Standard Oil Co.		13.20	15.00	17.00
Steele, Arthur	2.00		1.20	14.40
Steele, George W.	2.00			2.00
Steele & Farrington				2.00
Stegmaier, John	2.00	9.00	1.20	10.20
Steidle, John G.	2.00	1.20	30.60	33.80
Stephan, Jacob	2.00		6.00	8.00
Stetson, James H., heirs of		.60	12.00	14.60
Stetson, Kimball, W., est. of			12.60	12.60
Stetson, Marcia, heirs of			22.80	22.80
Stevens, James H.	2.00	30.00		30.00
Stranger, Chauncey R.	2.00		15.60	17.60
Stranger, Joseph A.				2.00
Stranger, William A.	2.00		16.20	16.20
Sturtevant, Helen			12.00	14.00
Sturtevant, Henry	2.00		21.60	21.60
Sturtevant, Henry T.	2.00	4.20	18.60	24.80
Sturtevant, Lloyd				2.00
Sturtevant, Simeon	2.00		3.00	3.00
Sundstrom, Martin	2.00		.60	2.60
Sweeney, Edward	2.00		9.00	11.00
Sweeney, William	2.00			2.00
Tache, Archie	2.00			2.00
Tache, Archie, Jr.	2.00			2.00
Tache, Frank	2.00		7.20	9.20

	POLL.	PERSONAL.	REAL.	TOTAL.
Taylor, Thomas J.	2.00		13.20	15.20
Thayer, William L.	2.00	.30	6.00	8.30
Thom, George	2.00			2.00
Thomas, Eliza			16.20	16.20
Thomas, Fred W.	2.00		7.20	9.20
Thomas, William A.	2.00	98.40	73.20	173.60
Thomas, William M.	2.00			2.00
Thompson, John T.	2.00		13.20	15.20
Thompson, Webster L.	2.00		10.50	12.50
Tinkham, Charles F.			67.80	67.80
Tohey, Fred J.	2.00		9.00	11.00
Tobin, James E.	2.00	1.20		3.20
Tobin, John	2.00			2.00
Tobin, John J.	2.00			2.00
Trow, Harris W.	2.00			2.00
Tucker, Hoyt H.	2.00			2.00
Tupper, Seth, heirs of			9.60	9.60
Tyler, Stephen	2.00			2.00
Turner, Rebecca			1.80	1.80
Valcourt, Joseph	2.00	.30	3.00	5.30
Vancini, Gai	2.00			2.00
Volk, Reinhardt	2.00	.30	14.40	16.70
Wadsworth, Arthur F.	2.00			2.00
Wadsworth, Wm. E.	4.00			4.00
Walch, Joseph	2.00			2.00
Ward, Lester	2.00		.60	2.60
Ward, William G.	2.00	.30	9.30	11.60
Washburn, Arthur L.	2.00			2.00
Washburn, George H.	2.00	1.80	10.92	14.72
Washburn, George L.			10.20	10.20
Washburn, Julia			14.40	14.40
Washburn, Lucy, heirs of			.60	.60
Washburn, Lucy M.			45.60	45.60

	POLL.	PERSONAL.	REAL.	TOTAL
Washburn, Sarah R.			9.60	9.60
Washburn, Martin P.	2.00	1.20	24.00	27.20
Washburn, Waldo	2.00	.60	12.30	14.90
Washburn, William P.	2.00			2.00
Waterman, Amanda			18.60	18.60
Waterman, Arthur H.	2.00			2.00
Waterman, Grace S.			6.00	6.00
Waterman, Sarah F.			6.00	6.00
Watson, Nathan B.	2.00		29.70	31.70
Weston, Charles B.	2.00			2.00
Weston, Daniel	2.00		.30	2.30
Whiting, George C.	2.00	.60		2.60
Wilbur, Charles C.	2.00		24.00	26.00
Willaur, Roscoe C.	2.00	.60	9.00	11.60
Williams, Charles	2.00		13.80	15.80
Willis, Edward			25.80	25.80
Willis, Jonah	2.00		.60	2.60
Willis, William H.			9.60	9.60
Winder, John	2.00			2.00
Winder, Peter	2.00		6.60	8.60
Winsor, Channing	2.00			2.00
Winsor, Deborah			29.40	29.40
Winsor, Joshua T.	2.00			2.00
Wolf, John	2.00		15.60	17.60
Woodward, Frank C.	2.00	4.20		6.20
Woodward, Fred E.	2.00	49.20	63.00	114.20
Woodward, Phosina			6.00	6.00
Wood, Herbert W.	2.00			2.00
Wood, Ichabod F.	2.00		4.80	6.80
Wood, Lorenzo W.	2.00			2.00
Wright, Ezra S.	2.00	36.00	27.00	65.00
Wright, Nathaniel T.	2.00	.30		2.30
Wright, Philander H.	2.00		15.00	17.00
Yager, Joseph	2.00			2.00

NON RESIDENT TAXES

	PERSONAL.	REAL.
Cornelius A. Faunce, Abington.		3.60
Heirs of Josiah Fuller, Baltimore.		.60
Thomas Nolan, Beverly.		1.20
George W. Adams, Boston.		1.20
Christian Anderer, Boston.		8.40
M. S. Ayer & Co., Boston.		11.40
Fred C. Bailey, Boston.		3.60
Heirs of Alexander H. Beal, Boston.		2.70
Joseph S. Beal, Boston.		12.60
Thomas P. Beal, Boston.		2.40
Forrest Bean, Boston.		2.40
Ida A. Burr, Boston.		18.00
George H. Burgess, Boston.		4.80
Harrison G. Burgess, Boston.		4.80
Marcia R. Demmon, Boston.		15.60
Ann E. Faunce, Boston.		47.40
Charles J. Foster, Boston.		9.00
Mary J. Foley, Boston.		5.40
Bessie P. Hammond, Boston.		1.20
William P. Hammond, Boston.		2.40
Dennis Haggerty, Boston.		.60
Charles H. Rutan, Boston.		2.40
Grace S. Stevens, Boston.		7.80
Almira Shephard, Boston.		.60
United States Shoe Machinery Co., Boston.	236.40	97.20
Jasper Whiting, Boston.		.30
Freeman Wright, Boston.		.60
Gustave Wunderlich, Boston.		11.10
Charles Bagnell, Brockton.		2.40
George Bagnell, Brockton.		4.20
Luthera M. Burgess, est of, Brockton.		

	PERSONAL	REAL
William R. Eakins, Brooklyn, N. Y.,		61.20
Clarinda Fuller, Cambridge,		10.80
Margaret E. Lamb, Cambridge,		2.40
Charles W. Sever, Cambridge,		54.00
Heirs of Ebenezer Sherman, Cambridge,		21.60
Theron M. Cole, Carver,		.60
Heirs of Thomas Vaughan, Carver,		1.20
Henry B. Chandler, Duxbury,		2.40
Horatio Chandler, Duxbury,		4.20
Samuel B. Chandler, Duxbury,		.18
Hattie W. Cushing, Duxbury,		.60
H. J. P. Earnshaw, Duxbury,		1.20
Edgar F. Loring, Duxbury,		2.40
Harrison Loring, Duxbury,		27.00
Heirs of Samuel Loring, Duxbury,		12.00
Margaret S. Perry, Duxbury,		20.40
Laura M. Phipps, Duxbury,		24.00
Michael Ryan, Duxbury,		9.00
Otis White, Duxbury,		16.80
Fred C. Fuller, East Bridgewater,		.90
Isadus Fuller, East Bridgewater,		.60
George M. & Phillip H. Holmes,		
Gardiner, Me.,	.90	18.00
Est. of Harvey W. McLaughlen, Hanover,		1.80
Lot Phillips & Co., Hanover,		82.00
Charles E. Soule, heirs of, Hanover,		1.20
William H. Bourne, Hanson,		1.20
John Lanman, Hingham,		12.00
Elisha C. Sprague, Hingham,		.60
Marcia Reed, Kansas,		1.20
Horace G. Littlefield, Lynn,		.60
William C. Quinby, Lynn,		1.20
Leonard C. Baker, Marshfield,		1.20
William Foster and sister, Marshfield,		19.20

	PERSONAL	REAL
John Crowley, Medford,		2.40
Clark & Cole, Middleboro,		43.80
Emma B. Cole, Middleboro,		1.20
Charles Phinney, Middleboro,		1.80
Whitman, Sparrow & Co.,	72.00	
Heirs of Anna Cushman, Newton,		3.40
John T. Prince, Newton,		3.60
Ellen Maccabee, New York,		.60
John A. Fuller, Omaha, Neb.,		1.20
Amanda Sias, Ossipee, N. H.,		.60
Est. of Baker Ford, Pembroke,		4.80
William Anderson, Plymouth,		.30
Edward E. Atwood, Plymouth,		4.80
James C. Bates, Plymouth,		2.10
E. & J. C. Barnes, Plymouth,	2.40	30.90
George B. Bartlett, Plymouth,		2.40
Madelina Beytes, Plymouth,		24.00
Harry Beytes, Plymouth,		1.20
Joseph Braumnecker, Plymouth,		10.20
John J. Buckley, Plymouth,		4.80
Eugene Callahan, Plymouth,		12.00
George H. Chase, Plymouth,		.60
Heirs of Robert Clark, Plymouth,		.60
Henry A. Cole, Plymouth,		.90
Zachariah Cushman, Plymouth,		.60
Charles G. Davis, Plymouth,		.60
William C. Diman, Plymouth,		.60
Rossi Dionigi, Plymouth,		.30
N. W. Douglas, Plymouth,	3.00	3.00
Elizabeth C. Drew, Plymouth,		33.60
Henry J. W. Drew, Plymouth,		.90
Heirs of Thomas B. Drew, Plymouth,		22.80
Ann Faunce, Plymouth,		17.40
Lena Fostermeier, Plymouth,		.90

	PERSONAL.	REAL.
Isaac L. Hedge, Plymouth,		1.20
Priscilla S. Hedge, Plymouth,		8.40
Nathaniel Holmes, Plymouth,		1.20
Edward Leonard, Plymouth,		1.20
Walter S. Loring, Plymouth,	30.00	1.20
John Moore, Plymouth,		.30
Alexander Morrison, Plymouth,		.60
Elisha Nelson, Plymouth,		.30
Joseph Nelson, Plymouth,		.30
Andrew Norton, Plymouth,		7.80
Plymouth Cordage Co., Plymouth,		11.40
Michael Ryan, Plymouth,		.60
Jacob Souer, Plymouth,		3.60
Gamaliel Thomas, Plymouth,		.30
Town of Plymouth,		.60
Matthews Trouterick, Plymouth,		1.80
William H. Winsor, Plymouth,		1.20
Albert H. Dennett, Plympton,		.30
Elijah S. Ford, Plympton,	14.40	
Lewis Fuller, Plympton,		.60
Melvin L. Fuller, Plympton,		.60
Martin W. Keevey, Plympton,		.60
Josiah W. Thompson, Plympton,	1.20	
Samuel C. Wright, Plympton,	1.20	
Maskell F. Carll, Providence, R. I.,	24.60	
William C. Swineburne, Providence, R. I.,	5.40	
Ichabod W. Faunce, Quincy,	.90	
Lucy J. Bryant, Quincy,	.60	
Sarah A. Lincoln, Quincy,	14.40	
Lemuel B. Holmes, Rochester, N. H.,	4.80	
Deborah J. Southworth, Rockland,	.60	
Edward Hargreaves, Roxbury,	7.80	
John Higgins, Somerville,	.60	
Lizzie A. Chessman, Waltham,	3.60	

	PERSONAL.	REAL.
Charles A. Vincent, Waltham,		9.60
John W. Oldham, Wellesley,		12.00
Helen P. Vickery, Weymouth,		10.20
William H. Dunbar, Whitman,		1.20
Herbert Manley, Whitman,		1.80
Winthrop T. Packard, Whitman,		3.60
Andrew J. Peterson, Whitman,		5.70
Elizabeth S. Reed, Whitman,		1.80
William Tirrell, Whitman,		1.80
George H. Walker, Whitman,		12.00
Thomas Prince, Worcester,		1.80

PUBLIC LIBRARY.

FREDERIC C. ADAMS PUBLIC LIBRARY.

Report of Trustees.

The people of the Town of Kingston have reason to congratulate themselves on the possession of a public library at once useful and beautiful. The Trustees are pleased to note that the people are more and more turning to it for information on all sorts of subjects. To its custody the people may wisely commit rare books and manuscripts which will there be carefully preserved and made servicable to all.

It is the aim both of the School Committee, who select the books, and of the Trustees to make the library a storehouse of useful and entertaining books, covering the widest range of topics that the income of the Fund will permit. Readers are, therefore, invited to fill out the Recommendation Blanks, to be had of the Librarian, and thus indicate desirable books which might otherwise be overlooked.

Cases have been provided in the reading room for reference books and for the latest volumes of general interest, so that they may be examined without trouble or delay.

The unbound magazines which have been accumulating since the opening of the Library are now at the bindery and will shortly be placed on the shelves. These volumes of Harper's, Scribner's, Century, Atlantic, etc., contain many complete novels, as well as illustrated articles on a wide variety of topics. These volumes will thus suit the needs both of general readers and special students.

The Library is designed and maintained as a place for reading and study. Hence people should refrain from using

the reading room as a waiting station for the electric cars.

Owing to a new issue of stock by the Plymouth Cordage Co. and the consequent granting of "Rights" to stockholders, the Library, as the holder of ten shares, has been enabled to add to its permanent fund two more shares of Cordage stock, and to place \$154 in the Five Cents Savings Bank of Plymouth. This has been done without expense to the town. The house in Minneapolis has never had the modern improvements, which are demanded of a house located in a city. By providing the plumbing we are enabled to secure additional rental.

A Supplement to the catalog has been printed, and both Catalog and Supplement are on sale at the library.

The following gifts have been received:—

The Field Genealogy, 2 vols., from Marshall Field; The Prince of India, 2 vols., and Gloria-Mundi, from E. M. Bartlett; The History of Malden, from D. P. Covey; The Lawson History of America's Cup, from Thomas W. Lawson; My New Curate, and Questions and Objections concerning Catholic Doctrines and Practices, from Rev. J. J. Buckley; Vital Records of Pelham, Princeton, Walpole, Alford, Peru, Hinsdale, and Montgomery, 7 vols., from the New England Historic Genealogical Society; 20 volumes of Public Documents from the Government; and Georgian, and The Northwest Indians from unknown donors.

The number of books in the library is 5504. The reading room is provided with 30 magazines, 12 weekly and 4 daily papers. The total number of those using the reading room was 4927, or an average of 14 per day.

The total number of books loaned for home use was 11,046, classified as follows:—

Magazines,	568
Religion,	161
Philosophy,	39
Sociology and Education,	221

Natural Science,	369	
Useful Arts,	172	
Fine Arts,	239	
Literature,	459	
History,	399	
Travels,	404	
Biography,	282	
Total Non-fiction,		3312
Fiction,		7734
Average circulation per day,		31

INCOME OF F. C. ADAMS FUND.

Balance on hand, Jan. 1, 1902,	\$23 53	
Income for the year,	706 34	
Income from Adams School Fund,	134 58	
Cash from sale of catalogs,	4 15	
		\$868 60
Paid for Supplement to Catalog,	\$40 00	
Paid for books, magazines, papers,		
etc.,	596 44	
Paid for plumbing and repairs of		
house in Minneapolis,	225 00	
		\$861 44
Balance on hand,		7 16

TOWN APPROPRIATION.

Balance from 1901,	\$77 91	
Appropriation for 1902,	900 00	
		\$977 91
Paid—		
Librarian,	\$347 00	
Janitor,	180 00	

Book cases,	50 25	
Repairs,	31 73	
Coal, wood, and oil,	104 76	
Supplies,	19 25	
Express and postage,	8 62	
Rent of Safe Deposit Box,	6 00	
		\$747 61
Balance on hand,		\$230 30

LIBRARIAN'S CASH ACCOUNT.

Cash received from fines,	\$37 91	
Expended by Librarian for sundries,	20 73	
Balance paid to Treasurer,		\$17 18

RECAPITULATION.

Income from F. C. Adams Fund,	\$706 34	
Balance, F. C. Adams Fund, 1901,	23 53	
From Adams School Fund,	134 58	
Sale of Catalogs,	4 15	
Town Appropriation, 1902,	900 00	
Balance Town Appropriation, 1901,	77 91	
Fines,	37 91	
		\$1,884 42
Paid—		
From Adams Funds,	\$861 44	
From Town Appropriation,	747 61	
From amount received for fines,	20 73	
		\$1,629 78
Balance in hands of Treasurer,		\$254 64

ERNEST M. BARTLETT.

Treasurer.

This certifies that I have examined the above accounts and find them correct and properly vouched for.

L. R. FORD,
Auditor.

The goodly balance shown above will be nearly all required to pay outstanding bills and to meet the increased cost of fuel of which the library has scarcely any stock now on hand. Consequently the Trustees must ask for the usual appropriation of \$900, which they deem the smallest sum practicable, for the library cannot, like other departments, overdraw its appropriation.

HORATIO ADAMS,
HARVEY A. SOULE,
ERNEST M. BARTLETT,
HENRY B. MAGLATHIN,
BENJ. P. BARSTOW,
LEANDER S. COLE,
Trustees.

Report of TOWN TREASURER

Collector and Town Clerk

HENRY S. EVERSON, Treasurer,

In account with the TOWN OF KINGSTON.

DR.

1902.			
Jan. 1.	To Uncollected Taxes, 1896,	\$6.53	
	1897,	22.15	
	1898,	35.58	
	1899,	78.28	
	1900,	628.81	
	1901,	1,818.82	
			\$2,620.17
	Cash on hand,		3,352.06
	County Treasurer, Dog Fund,		167.34
	State Treasurer, School Fund,		638.08
Jan. 4.	Town of Pembroke, Poor,	10.00	
	City of Lynn, Poor,	21.77	
	City of Fall River, Poor,	102.50	
			134.27
	Town of Pembroke, Tuition,	166.67	
	Town of Plympton, Tuition,	109.00	
	Town of Duxbury, Tuition,	10.00	
	School Committee, Tuition,	8.33	
			291.00
	School Committee, Tickets Sold,		113.00
	School Committee, Old Desks Sold,		4.25
April 4.	George H. Bonney, Auction License,	\$2 00	
	Walter H. Faunce, Auction License,	2.00	
	Henry F. Breach, 6th class,	1.00	
			5.00
	B. A. Hathaway, 3rd Dist. Court,		115.00
	Plymouth Nat. Bank Loan,	2,000.00	
	Plymouth Nat. Bank Loan,	3,000.00	
			5,000.00
	State Treas., Inspection of Animals,		50.00
	Water Commrs., Water Collections,		1,049.89
Sept. 10.	State Treas., School Supt.,	\$500 00	
Dec. 11.	" Corporation Tax,	3,616.41	
	" Nat. Bank Tax,	1,351.14	
	" State Aid,	447.00	
	" St. Railway Tax,	229.02	
	" Burial of Soldier,	35.00	
			6,178.57
	Brockton & Plymouth St. R. R. Co., Exercise Tax,		254.55
Dec. 31.	Town House Committee		30.50
	Interest on Taxes,		69.02
	Tax List for Collection,		17,960.48
			\$41,036.18

CR.

1902.			
May 23.	State Treasurer, One-fourth Liquor License	\$	25
Nov. 26.	County Treasurer, County Tax,		1,754.60
Dec. 10.	State Treasurer, State Tax,		825.00
31.	Plymouth National Bank, Note dated May 1,		2,000.00
	" " " " June 1,		3,000.00
	" " " " " " " "		235.43
	Highway,		4,153.55
	Poor,		3,541.28
	Water Department,		1,800.13
	State Aid,		596.00
	Soldiers' Relief,		545.25
	Teachers Wages,		5,392.00
	Books and Supplies,		862.56
	Repairs		849.03
	Music		275.00
	Superintendent of Schools,		600.00
	Fisheries,		247.46
	Conveyance,		385.40
	Public Library,		900.00
	Fuel and Care,		1,075.17
	Drawing,		250.00
	Liquor,		65.16
	Town House,		310.20
	Water Bond and Interest,		2,877.20
	Incidentals,		203.56
	Tree Wardens,		362.60
	Old Burying Ground,		49.75
	Treasurer and Collector,		350.00
	Memorial Day,		93.00
	Contingent,		1,587.18
	Fire Department,		598.46
	Snow and Special,		484.45
	Forest Fire,		67.85
	Abatement,		148.63
	Hawks, Woodchucks and Seals,		51.25
	Uncollected Taxes, 1896,	\$23.93	
	1899,	47.48	
	1900,	269.22	
	1901,	906.17	
	1902,	2,500.84	
			3,548.14
	Cash on hand,		1,000.09
			\$41,036.18

ADAMS SCHOOL FUND.

Henry S. Everson in account with the Town of Kingston,

1902.

DR.

Jan. 1. To amount on hand,	\$5,226 00
To amount received for dividends,	220 69
	<hr/>
	\$5,446 69

CR.

By bills paid School Committee to Jan. 1, 1903,	\$309 58
	<hr/>
	\$5,137 11

Leaving the above amount in the hands of the Treasurer.

This certifies that I have examined all of the accounts of the Town Treasurer and find them correct and properly vouched for.

Jan. 28, 1903.

L. R. FORD.

TOWN CLERK'S REPORT.

January 1. Chester Briggs Peterson of Whitman and Helen Elvira Soule of Kingston.

April 10. Hortense E. Merry of Duxbury and Ruth L. Hatch of Whitman.

April 16. Harry Christian Hanson of Roxbury and Carolyn Orrall Butler of Kingston.

April 20. Thomas Ward Bailey and Sarah Yardley De-Normandie, both of Kingston.

June 5. Herbert A. Geel and Sarah A. Story, both of Kingston.

June 25. Lester Everett Ward of Kingston, and Alice Kate Abbott of Plymouth.

June 26. Thomas W. Baldner and Annie Elizabeth Grozenger, both of Kingston.

July 23. Charles A. Ransom and Vira Christine Nickerson, both of Kingston.

August 16. Adelbert F. Trautwig of Plymouth and Catherine Bouse of Kingston.

October 12. Arthur A. Sprague of Milton and Alice M. Simmons of Duxbury.

October 15. James Henry Keer, Plainfield, N. J., and Rosie Etta Meller of Kingston.

November 5. Felix B. Greenhaw of Plymouth and Annie W. McGuire of Kingston.

November 23. John Linwood Keevey and Minnie May Patriquin, both of Plympton.

December 11. George Lewis Raymond of Kingston and Effie F. M. Turney of South Framingham.

BIRTHS RECORDED IN KINGSTON FOR 1902.

DATE.	NAME.	PARENTS.	MAIDEN NAME.
Jan 10	Grove Tallock Bain	James Bain and Elizabeth M.	Grove
" 12	Shappert	William Shappert and Versella	Bader
Feb. 3	Bertha Emily Groszinger	Andrew Groszinger and Madeline	Breschian
" 11	Glendon E. Gish (3d)	John Gish and Mary T.	Murphy
" 20	Quinn	Edward W. Benson and Sylvia	Herrandez
Mar. 6	Isadora Frances Boston	Alfred H. Maynard and Caroline	Rigdon
" 17	Mary Floriana Manette	Eugene Manette and Flora	Emmet
" 23	Edward Tasselle	Archie Tasselle and Adele	Foster
" 25	Dorothy May Bonney	Wilfred Bonney and Ida	Fenton
April 14	Oliver Appleton Blanchard	Rudolph Blanchard and Ida	Heckenbail
" 24	Krieger	Ezra S. Wright and Mary E.	Cole
" 30	Oliver May Wright	Rudolph Krieger and Mary E.	Tschae
May 8	Emma Emmet	Arthur Emmet and Melvina	Schaefer
" 18	Carl Francis Feldt	Robert Feldt and Catherine	Scullie
" 22	Carl Francis Feldt	Edward F. Holman and Carole	Kunz
June 5	Frederick N. Leidlhoff	William F. Leidlhoff and Susanna	Schmidt
" 7	Peck	Julius Peck and Mary A.	Williams
" 10	Benjamin Sussco	Nicholas Sussco and Annie M.	Thomas
" 27	Sadie May Kilton	Estlin W. Kilton and J. Isabel	Moller
" 29	Della St. Onge	Leola St. Onge and J. Isabel	Evickson
July 7	Albert Erickson Holloway	Marion M. Holloway and Alfreda M.	Taylor
" 8	Robert Milton Bonney	Arthur M. Bonney and Isabella P.	Woodward
" 8	Eleanor Louise Gorham	Allen R. Gorham and Caroline P.	Strassel
" 8	Ruth Anna Starkevut	Simon Starkevut and Jennie	Wright
Aug. 9	Walsh	Joseph Walsh and Mary	Dunn
" 9	Gertrude Irish Wright	Arthur L. Washburn and Edith M.	Samuel
" 25	George Arthur Washburn	Estlin M. and Emily	Carrow
" 27	Mary Muri	James Ryan and Bridget D.	Schellard
" 31	William James Ryan	Joseph Dubie and Leah	Morgan
" 31	Phillip Dubie	Thomas Kullber and Mary	Christina
Sept. 19	James Kullber	Charles McManus and Mary T.	
" 20	Dorothy Frances Carrow	Joseph Carrow, Jr. and Sarah	
Oct. 6	Louisa Blanche Dunell	Wendall H. Dunell and Flora	
Nov. 3	John Clarence Odette	Joseph Odette and Flora	

DEATHS RECORDED IN KINGSTON FOR 1902.

DATE.	NAME.	AGE.	Y. M. D.	CAUSE OF DEATH.	PARENTS NAME.
Feb. 22	Charles F. Stranger	43	4	Pulmonary tuberculosis	Andrew Stranger and Helen E. Scott
" 25	John Desreux	8	7	Disease of the spine	Alexander Desreux and Lucy Chesson
Mar. 13	Martin Delano	74	8	Disease of the gall bladder	Charles Delano and Betha Prior
" 25	William Haggerty	77	1	Arterio sclerosis	Dennis Haggerty and Catherine Haggerty
" 26	Dorothy Bonney	76	3	Stomach	Wilfred Bonney and H. Ella Foster
April 12	Catherine A. Sargent	76	1	Stroke	David Towne and Almira
" 31	Mary E. Burns	42	9	Cancer	Eleazer Puleford and Silas
May 8	Betsy M. Cashman	75	7	Disease of the heart	Robert Cashman and Betsy Morton
" 19	Ellen Thomas Bailey	20	7	Gastric ulcer	Luher Phillips and David Morehead
June 2	Frederick N. Leidlhoff	20	10	Convulsions	William Leidlhoff and Susannah Kunz
" 3	Annie Louise Reed	—	2	Convulsions	Arthur A. Reed and Alice L. Glass
" 6	Levi Ford	70	1	Stroke	Joseph Ford and Asenath McLaughlin
" 9	Sadie May Kilton	—	1	Infantile	Estlin W. Kilton and Sarah P. N. Carver
" 13	Estlin W. Kilton	27	3	Pneumonia	Levi H. Kilton and Sarah P. N. Carver
July 1	Bartram L. Gilbert	26	12	Disruptive colitis	John Ormond and Mary Prendergast
" 16	Michael Ormond	51	4	Bright's disease	Artemus Levenari and Mary Holmes
" 20	Lacy B. Bradford	67	6	Heart disease	Oliver Bradford and Hannah Sherman
" 25	Charles Lapham	63	13	Tubercular laryngitis	Winlow Wright and Mary Cole
Aug. 11	Martin E. Cashman	54	4	Cholera infantum	Rudolph Krieger and Mary E. Prendergast
" 14	Mildred M. Krieger	80	14	Old age	Poling Shannons and Polly McLaughlin
" 30	Polly S. Thompson	74	9	Cerebral thrombosis	Joshua Haskell and Sarah Bray
Sept. 19	Macla C. Bryant	79	9	Pneumonia	Edward Stranger and Jesse King
" 19	Joseph A. Stranger	79	9	Myocarditis	Estlin Muri and Emil Schumacher
" 20	Mary Muri	79	1	Old age	Patrick Logan and Bridget McManus
Nov. 10	Elizabeth McCarty	55	3	Old age	William McIntire and Eliza J. Long
Dec. 4	Elizabeth M. McIndre	86	3	Stroke	Levi Waterman and Zilpah Bradford
" 9	Zilpah E. Waterman	87	3	Cardiac failure	Elphaz Jones and Phoebe Vanbody

WATER REPORT.

SEVENTEENTH ANNUAL REPORT OF WATER COMMISSIONERS OF KINGSTON

For the year ending Dec, 31, 1902.

Fellow Citizens:

The receipts of the water department for the year are as follows:

From water takers,	\$3,718 23
From E. P. Hurd, rent of power,	300 00
From John Wolf, slacking lime,	66
From Savery & Fish, slacking lime,	1 44
From Sylvia Hunt, material and labor,	11 10
From Jacob Sower, pipe,	1 50
From sale of old junk,	9 10
From Henry Perault, slacking lime,	2 64
From Horace P. Maglathlin, use of pump,	1 50
From Chandler & Glover, slacking lime,	72
From Frank C. Woodward, slacking lime,	3 00
Appropriation by the Town,	800 00

\$4,849 89

Expenditures.

Michael Ormond, supt.,	240 00
Thomas Ormond, supt.,	60 80
Memorial Press, printing,	15 75
N. Y. & Boston Express Co.,	1 65

—77—

Crosby Steam Gauge Co., supplies,	27 00
P. W. Maglathlin, wood,	2 00
John Murry, labor,	2 35
Walworth Mfg. Co., supplies,	32 19
Michael Ormond, cash paid,	2 00
Thomas Hart, labor,	4 59
Jacob Boop, labor,	3 74
Geo. E. Cushman, trustee, rent of room,	12 50
Seaside Foundry Co., castings,	3 08
Geo. E. Cushman, supplies,	10 57
D. H. Craig, coal,	46 97
Phillip Smith,	1 75
Geo. E. Cushman, supplies,	4 62
Geo. H. Clark,	3 12
Chicago Rawhide Mfg. Co., supplies,	1 20
P. S. Huckings & Co., lumber,	138 28
Phillip L. Rogerson, labor,	4 50
Geo. B. Holmes, labor,	212 14
Horace Holmes, labor and supplies,	95 00
H. P. Bailey & Bro., stove,	6 50
T. H. Fuller, clerk and collector,	75 00
Alexander Holmes, lumber,	2 75
Hathaway & Sampson, labor and material,	24 70
T. H. Fuller, books and stationery,	5 25
E. B. Chandler, teaming,	2 00
Braman, Dow & Co., pipe,	191 86
John Malone, labor,	35 95
Norish, Burnham & Co., supplies,	7 50
John Malone, supt.,	200 20
C. Drew & Co.,	32 08
W. W. Myrick,	8 75
Dodge Mfg. Co.,	141 18
Coffin Valve Co.,	56 00
E. G. Brown, labor,	27 40
Whitman, Sparrow & Co.,	1 50

Knowles Steam Pump Co.,	7 26
Fairbanks & Co.,	4 25
C. E. Bailey,	4 20
Geo. E. Cushman, trustee, rent of room,	12 50
Sumner & Goodwin,	27 54
Bond, paid April 1st 1902,	1 000 00
Note, paid Oct. 1st., 1902.	500 00
Interest on Bonds, Notes and collections,	1,387 20

Appropriated by the Town,	800 00	\$4,687 33
Receipts for Water,	4049 89	
		\$4,849 89
Amount of bills paid,		\$4,687 33
Balance,		162 56

WATER BOND ACCOUNT.

Bonded debt by first issue, Jan. 1st, 1902,	\$27,000 00
Second issue by notes, 1902,	8,000 00
	\$35,000 00
Bond paid April 1st, 1902,	1,000 00
Note paid Oct. 1st, 1902,	500 00
	\$1,500 00

The interest has been paid to Oct. 1, 1902. There will be due in 1903, \$1,000.00 on bonded debt and \$500.00 on notes, also interest on the whole debt.

There has been added to the system the last year ten taps, making 388, supplying 375 families.

Also free of charge:—

Six schoolhouses,

Eight schools.

Three hose houses.

One Townhouse.

One Almshouse.

Three watering troughs.

One Public Library.

Seventy-six fire hydrants.

Which would amount to \$1,775.00 at scheduled rates.

STOCK ON HAND, DEC. 31, 1902

60 feet of $\frac{3}{4}$ inch lead lined iron pipe.
 20 feet of 1 inch, 44 feet of $\frac{3}{4}$ inch iron pipe.
 225 lbs. of old lead.
 250 lbs. tin lined pipe.
 15 corporation cocks.
 27 stops and wastes.
 20 lbs. of solder.
 1 tapping machine.
 1 diaphragm pump.
 1 steam pump.
 1 steam boiler.
 24 feet of 10 inch pipe.
 108 feet of 8 inch pipe.
 84 feet of 6 inch pipe.
 115 feet of 4 inch pipe.
 7 branches.
 7 sleeves.
 4 reducers.
 8 plugs.
 1 gate.
 Belts, shafting, pulleys, pipe fitting tools.

During the past year extensive repairs have had to be made at the pumping station. In the seventeen years that the plant has been established but very little repairs have

been made. The pumps are in very good condition and will probably last quite a number of years yet. The gearings to the water wheel were very badly worn so that new ones had to be put in. The flume had been leaking badly for more than a year and we did not consider it safe to let it go longer as it was liable to give out at any time. A new flume has been built and with other needed repairs the pumping station has been put in very good condition.

During the making of these repairs we had to run by steam using our own boiler and through the kindness of Mr. Hurd in letting us take his spare engine we were enabled to keep up the supply of water at that time with but very little inconvenience to any one.

By the death of Michael Ormond we lost a superintendent whose knowledge and care of the whole water system was most perfect and which will take a new man many months to learn to do the work as well as he did.

A great deal of water is being wasted in some cases by parties using hose by allowing the water to run all night. As the use of hose is limited to one hour per day, the commissioners ask such parties to conform to the regulations of the water works.

No extensions have been made to the system the last year.
Total cost to Dec. 31, 1902. \$66.483 24

GEORGE B. HOLMES.
EDWARD G. BROWN.
TRUMAN H. FULLER.
Water Commissioners.

LIST OF WATER TAKERS, AND AMOUNT PAID BY EACH. 1902.

Adams, Lydia T.	\$20 00	Brown, David	25 00
Adams, Horatio	135 00	Bryant, Sylvanus	9 00
Atwell, Charles F.	6 00	Boop, Jacob	15 00
Adams, Wendall H.	14 00	Bryant, Mrs. Nathaniel	6 00
Atwell, Samuel	9 00	Blanchard, Mrs. Harriett	6 00
Adams Lodge, I. O. O. F.	10 00	Barker, Edward T.	6 00
Adams, Harriet	9 00	Basler, Phillip	9 00
Atwood, E. Elbridge	36 50	Benson, Levi W.	9 00
Adams, Charles H.	20 00	Bain, Robert	6 00
Ayer, Eugene G.	32 50	Bonney, Geo. H.	6 00
Anderson, August	6 00	Bouse, Jacob	8 00
Atwood, Herbert	9 00	Bradford, Horace S.	6 00
Brown, Wm. M.	\$14 00	Bailey, Fred C.	21 65
Bartlett, Hattie	32 00	Bumpus, Wm. A.	9 00
Barstow, Benj. P.	24 50	Bray, Maria	12 00
Bonney, Wallace	6 00	Bailey, Fred C.	4 68
Baker, Walter	6 00	Beytes, Madeline	24 00
Berry, Roscoe G.	6 00	Basler, John	9 00
Bates, Est. of Caleb	12 00	Bartlett, Susannah	3 00
Bagnell, John C.	9 00	Bunker, George E.	6 00
Beytes, Est. of Nancy	12 00	Baker, Chester A.	9 00
Burgess, Marion B.	6 00	Bailey, Ellsworth C.	1 50
Bailey, Justus A.	8 00	Briggs, Rebecca	5 50
Baker, Thatcher	20 00	Collins, Lawrence	\$7 00
Brown, Edward G.	21 00	Cantori R.	7 50
Bradford, Amos P.	3 00	Christopher, Guitona	10 50
Bunker, Esther	6 00	Carrow, Joseph	16 50
Barstow, Daniel W.	9 00	Cook, Matilda	6 00
Baptist Society.	14 00	Cole, L. S.	22 00
Bailey, Caleb E.	25 25	Cobb, Mary E.	14 00
Baker, Edgar A.	15 50	Cole, Mrs. Lemuel P.	4 16
Bartlett, Isabella	10 50	Cole, Waldo S.	17 50
Braunecker, Joseph	6 00	Callahan, James	6 00

Cobb, Herbert W.	4 50	Douglas, N. W.	8 00
Cole, Horace C.	6 00	Demman, Marcia	11 50
Chandler, Algernon S.	62 75	Delano, Joshua, Jr.	9 00
Callahan, Michael T.	20 00	Drew, Elizabeth C.	13 32
Clark, Geo. H.	20 00	Dries, Henry	9 00
Childs, Rosa	3 00	Evans, Green	\$12 00
Cobb & Drew	31 00	Eager, Robert	6 00
Cole, Charles H.	17 00	Evans, Willis	12 00
Cunningham, Wm.	4 00	Everson, Henry S.	16 00
Chandler, Alfred W.	6 00	Elder, Eugene F.	9 00
Cushman, Est. Joseph T.	3 00	Eakins, Wm. R.	15 75
Cushman, Fred L.	11 00	Farrington, John P.	\$3 00
Cobb, Rebecca S.	16 00	Ford, L. R.	22 50
Childs, Charles H.	20 00	Ford, M. W.	14 00
Cushman, George	9 75	Ford, Levi E.	10 50
Cushman, George E.	29 00	Foster, Charles J.	6 00
Chandler, Claud M.	10 00	Foster, Est. Wm. G.	18 00
Carl, M. Frank	1 50	Faunce, Eleazar	6 00
Clarke, G. Herbert	9 00	Faunce, Mrs. A. C.	14 00
Churchill, Henry	18 00	Freeman, David C.	12 00
Chandler, Elbridge H.	15 00	Ford, Mrs. Levi	4 00
Corey, Gustavus	6 75	Faulkner, Clara I.	14 00
Cushing, Winslow	6 00	Faunce, Ann E.	9 00
Cook, Edwin	6 00	Foster, H. Waldo	7 50
Drew, Charles H.	\$9 00	Farrington, John B.	6 00
Delano, David	6 00	Finney, Stephen	9 00
Dunbar, Ruf. W.	15 00	Fuller, T. H.	15 00
Devine, Mrs. Patrick	9 00	Fuller, Clarinda	6 00
Drew, C. & Co.	10 00	Flynn, Thomas E.	4 00
Drew, Christopher P.	11 00	Finney, Rebecca	31 00
Davie, Solomon	13 50	Gray, Heirs of John	\$7 00
Drew, John N.	6 00	Graves, George A.	9 00
Delano, Mary J.	9 00	Gorham, Allen R.	9 00
Dawes, John C.	43 00	Geel, Benj. H.	15 50
DeNormandie, C. Y.	20 00	Gilpin, Joseph	9 00
Darey, James W.	10 00	Hall, James L.	\$18 00
Drew, John I.	6 00	Hammond, Walter C.	67 75
Donley, James	6 00	Hickey, James	6 00

Holmes, Horace	19 25	Murry, John	6 00
Holmes, George B.	15 00	McGuire, Wm.	7 50
Haggerty, Est. Wm.	9 00	McManus, Bridget	12 00
Howe, C. F.	8 00	Maglathlin, P. W.	54 25
Hart, Dennis	6 00	Mange, Winthrop	3 00
Holmes, Albert E.	6 00	Monks, John	18 00
Hall, Ellen G.	2 00	Malone, James T.	3 00
Hunt, Sylvia W.	10 00	Miler, Jacob	10 50
Hurd, Edward P.	11 00	McGrath, Michael	6 00
Holmes, Clyntia D.	47 00	McGrath, Thomas	6 00
Holmes, Arthur B.	6 00	Maglathlin, Frank W.	16 32
Hatch, Charles W.	15 00	Morey, Charles S.	9 00
Holmes, Alexander	23 00	McDonald, Allen	9 00
Holmes, Elnathan	9 00	Monks, Charles L.	6 00
Holmes, Roger C.	19 00	McCrane, James	6 00
Holmes, Helen	5 00	Maglathlin, F. W. & Co.	15 00
Holman, Edward F.	34 50	MacLathlin, Frances	15 00
Hall, Henry	9 00	Merry, Everett S.	12 00
Higgins, J. G.	6 00	Monks, John R.	17 50
Hammond, James C.	14 00	Moody, Lewis	6 00
Jones, Henry M.	14 00	Mahoney, John	3 50
Kennedy, Frank M.	\$9 00	Nichols, Annie H.	17 00
Kennedy, Est. of James	22 00	Newcomb, Maria	6 00
Keith, H. K.	61 50	N. Y., N. H. & Hartford R.	
Keith, L. H.	32 00	R. R. Co.	55 00
Lapham, Charles	20 00	Nickodemus, John	9 00
Lanman, Mary E.	9 75	Ormand, Michael	6 00
Lanman, Ruth	2 00	O'Brien, Mary	6 00
Lapham, Albert	14 00	O'Brien, Patrick	6 00
Lanman, Edward T.	9 00	Orthodox Society.	4 00
LePorte, Eliza R.	6 00	Oldham, J. W.	6 50
Lapham, Oscar	9 00	Plymouth, Cordage Co.	6 00
Lawry, Charles A.	14 00	Potter, Wm.	6 00
Lamb, M. E.	6 00	Peckham, Mary H.	3 00
Low, George E.	11 25	Phipps, Laura M.	1 00
		Peck, John	6 00
Loring, Edgar W.	15 75	Pierce, Arthur W.	17 00
Myrick, Wm. W.	31 50	Page, Marion	13 00

Pratt, Alphonso	9 00	Sandstrom, Martin	6 00
Prendergast, Edwin	6 00	Schmidt, John	8 30
Peck, John 3d	16 50	Smith, Adam	21 00
Pratt, Heirs of Eulalie	11 50	Smith, Martin,	6 00
Phillips, Lot	6 00	Seibenschue, heirs of R. G.	16 50
Quinn, John	35 50	Shoppart, Wm.	9 00
Randall, John	7 50	Sargent, J. W.	10 50
Rushlin, Howard L.	7 50	Skakle, John A.	19 00
Ring, Daniel W.	6 00	Sherman, Edwin I.	3 00
Robbins, Lucy M.	12 00	Sampson, Isaac L.	1 50
Ransom, Edward A.	6 00	Sower, Jacob	2 00
Raymond, A. J.	6 00	Tinkham Charles	25 50
Reed, Adalaid	6 00	Thomas, Wm. A.	16 75
Ripley, Emily	18 00	Thompson, Webster L.	6 00
Ripley, Obed	6 00	Thompson, John T.	6 00
Reinhardt, Henry	17 00	Tobin, James	6 75
Readel, Robert	13 00	Turner, Rebecca	6 00
Rudolph, Wm.	7 00	Taylor, Thomas J.	9 00
Ripley, Henry L.	12 00	Thomas, Mrs. Geo. B.	9 00
Russell, C. D.	3 00	Trustees of Willis Fund	11 50
Reinhardt, Lewis,	17 00	Vazzarna, David	7 50
Ryan, Michael	6 00	Waterman, Grace	9 00
Reinhardt, John	13 00	Waterman, Amanda	10 12
Reckenbiel, Henry	6 00	Washburn, Geo. L.	6 00
Ryder, Howard	1 50	Washburn, Lucy M.	22 15
Ryan, James	6 16	Williams, Charles	6 00
Reinhardt, Mrs. J. M.	6 00	Washburn, Julia A.	10 00
Smith, Patrick	10 50	Watson, Nathan R.	15 50
Sherman, Est of Ebenezer	6 00	Willis, Edward	6 00
Stetson, Emma F.	12 00	Woodward, Fred E.	26 50
Stegmaier, John M.	13 50	Washburn, Sarah R.	12 00
Simmons, Mary E.	13 00	Wright, Ezra S.	17 00
Smith, Richard	6 00	Winsor, est of Elbridge	6 00
Sprague, N. D. W.	6 00	Walker, Geo. H.	6 00
Sampson, Julia H.	17 00	Willor, Charles	17 00
Simmons, Helen	6 00	Winter, Peter	26 00
Stranger, Wm. A.	9 00	Washburn, Waldo	6 00
Sampson, Seavey B.	6 00	Waterman, Sarah F.	6 00
Schaffer, Charles	13 50	Whitman Sparrow & Co.	13 00
Soule, Harvey A.	17 00	Wolf, John	4 50
Seaver, Charles	7 00	Ward, Ichabod F.	3 00
Shiverick, George	6 00	Woodward, Mrs. C. C.	3 00
Sampson, Nahum	6 00		

ANNUAL REPORT
OF THE
SCHOOL COMMITTEE
OF THE
Town of Kingston
FOR THE YEAR
1902

SCHOOL DIRECTORY.

COMMITTEE.

Benjamin P. Barstow, M. D., <i>Chairman</i> ,	
Term expires,	1903
Henry B. Maglathlin. Term expires,	1903
John W. Cobb, <i>Secretary</i> Term expires,	1904
Ernest M. Bartlett. Term expires,	1904
John T. Thompson. Term expires,	1905
Joshua Delano, Jr. Term expires,	1905

SUPERINTENDENT.

Hoyt H. Tucker.

TEACHERS.

WHERE TEACHING.	WHERE GRADUATED.	SALARY.	DATE OF BEGINNING SERVICE.
High School, Alvin A. Kumpion, Principal	Brown University	\$1,000	September, 1901
High School, Julia C. Carlton, Assistant	Salem Normal School	520	December, 1899
Center Grammar, Josephine S. Packard	Kingston High School	481	September, 1894
Center Intermediate, Stella B. Baker	Bryant & Stratton Commercial School	444	September, 1899
Center Primary, L. Whittle Dunbar, Prin.	Bridgewater Normal School	407	September, 1899
Center Primary, Mary A. Curran, Asst.	Bridgewater Normal School	296	January, 1902
Stony Brook, Susan Casey	Bridgewater Normal School	370	September, 1902
Rocky Nook Grammar, Alice B. Stormes	Bridgewater Normal School	481	September, 1900
Rocky Nook Intermediate, John P. Gale	Muskeget, Penn., Normal School	370	September, 1902
Rocky Nook Primary, Eva E. Stone	Gorham, Me., Normal School	370	September, 1900
Wapping, Sarah C. Faunce	Bridgewater Normal School	370	September, 1894
Sliver Lake, Elva L. Brown	Concord High School	286	September, 1897
Northwest, Maud H. Marsden	Hyalis Normal School	275	September, 1902
Supervisor of Music, Jerome F. Hamblue		250	September, 1900
Supervisor of Drawing, Lillian Newman	State Normal Art School		September, 1900

REPORT OF SCHOOL COMMITTEE.

To the tax-payers and parents of Kingston:—

The following report of the School Committee is respectfully submitted.

FINANCE ACCOUNT.

Dr.

Appropriation,	
Outside Tuition,	\$8,850 00
State Fund:	414 43
On Superintendent's salary,	300 00
For increase of teachers' salaries,	200 00
For general school purposes,	638 08
Dog Fund,	167 34
	<hr/>
	\$10,569 85

Cr.

Teachers' wages,	\$5,395 00
Fuel and care,	1,009 26
Repairs,	796 50
Incidental,	261 19
Books and supplies,	873 51
Music,	275 00
Drawing,	250 00
Conveyance,	267 90
Superintendent,	600 00
Unexpended,	841 49
	<hr/>
	\$10,569 85

—89—

School Accounts.

Schools.	Wages.	Fuel and Care.	Repairs.	Incidental.	Books and Supplies.
High	\$1520.00	\$117.74	\$60.59	\$14.07	\$253.77
Con. Grammar	481.00	Included with High			48.52
" Intermediate	411.00	43.52	34.88	1.60	80.81
" Primary	673.00	93.78	41.00	8.97	47.19
R. N. Grammar	169.00	31.50	528.38	3.00	31.01
" Intermediate	412.00	261.25	16.98	40.05	57.45
" Primary	316.00	Included with Intermediate.			32.19
Stony Brook	370.00	22.17	2.74	1.11	44.46
Wapping	358.00	21.00	5.19	2.75	28.80
Silver Lake	286.00	52.50	76.52	3.70	28.12
North West	286.00	29.50	29.15	8.25	31.32
General Incidental				176.70	
				Balance on hand	75.97

As the above account shows, the year ends with a considerable balance unexpended. This is owing to the rigid economy of the committee and the unusually large receipts from the State School Fund. We have also been helped by the increase in the amount of tuition received from pupils living in other towns. The esteem in which our schools are held by the people of adjoining towns is shown by these increasing receipts: 1900, \$152.21; 1901, \$362.33; 1902, \$414.43. The amounts received from these last sources, the State School Fund and Outside Tuition are likely to be much less for the current year, and hence this probable shrinkage must be offset by the town appropriation.

The Committee also submit the following statement of the income of the Adams School Fund, and the disposal of the same. The Fund itself is in the hands of the Town Treasurer and is deposited in savings banks.

Total income, 1896-1902,	\$1,422 94
One-fifth income for prizes,	\$284 58
Paid in prizes,	250 51
	<hr/>
Balance on hand for prizes next June,	\$34 07
One-fifth income for library purposes,	\$284 58
Paid to the Trustees of the F. C. Adams Public Library,	284 58

Three-fifths income for public lectures,	\$53 76
Paid for lectures,	748 57
	<hr/>
Balance on hand for lectures,	\$105 19

The Lecture Course of 1902 was placed in the hands of a sub-committee consisting of Dr. B. P. Barstow, E. M. Bartlett and J. T. Thompson. The Lecture Course Committee for the present season is Joshua Delano, Jr., J. W. Cobb, J. T. Thompson, to whom all suggestions concerning the lectures should be made.

With the exception of inadequate buildings, the schools are in better condition than at the time of our last report. The schools at Rocky Nook are well equipped. Larger seats were found to be necessary for the remodeled Grammar school room, and the old seats, which, though far from new, were still serviceable, were transferred to the Stony Brook school, where they are a decided improvement on the seats formerly in use.

Whatever the town may do in the way of larger buildings, new seats are necessary for the village grammar school. The seats in that room have been in use for nearly a generation, and are now worn and scarred beyond decency or repair.

Our stock of fuel is smaller than usual at this season, and we shall be compelled to pay high prices for some time to come. Furthermore, we have an additional schoolhouse to heat and care for. Consequently we must ask for an increase of \$100.00 to the appropriation for fuel and care.

We must also ask for more money for books and supplies. Parsimony at this point is wasteful. To hire teachers and then fail to provide adequate books and supplies is like paying wages to workmen in a factory equipped with few tools and worn-out machinery.

The urgent demand for enlarged school buildings in the central part of the town continues. At the Special Town

Meeting, June 14, 1902, the citizens failed to take any action to relieve the situation. Your committee still believes that a new schoolhouse, either a building for the High School or one for graded schools, as suggested by the Superintendent, is absolutely essential to the needs of the town and the welfare of the children. Owing to the lack of such building we shall probably lose a considerable part of the tuition now received from outside pupils, and fail to obtain the additional grant of \$300.00 per year from the State, as provided for by the new law of 1902. We trust that this "penny-wise, pound-foolish" policy will not continue forever.

We refer you to the report of the Superintendent in which these matters are discussed more fully.

During the year the town received the expected rebate of \$500.00 on the salary of the Superintendent. According to law \$200.00 of this must be used for the increase of teachers' wages. Consequently we have been able to make some slight additions to salaries.

After fully discussing the needs of the schools and carefully estimating expenses, we recommend the following appropriations:

Teachers' wages,	\$5,000 00
Books and supplies,	800 00
Fuel and care,	1,100 00
Repairs,	600 00
Conveyance,	375 00
Incidentals,	225 00
Superintendent,	300 00
Music,	275 00
Drawing,	250 00

Respectfully submitted,
 BENJAMIN P. BARSTOW,
 JOHN W. COBB,
 ERNEST M. BARTLETT,
For the Committee.

SUPERINTENDENT'S REPORT.

To the School Committee of Kingston:—

The following report of the Superintendent of Schools is respectfully submitted for your consideration.

STATISTICS.

From the School Census of Sept. 1, 1902.

Number of boys between the ages of 5 and 15,	156
Number of girls between the ages of 5 and 15,	175
Total,	331
Number of boys between the ages of 7 and 14,	114
Number of girls between the ages of 7 and 14,	128
Total,	242

Membership and Attendance.

For the School Year, 1900-1901.

Number of pupils of all ages,	424
Average membership of all the schools,	374
Average attendance of all the schools,	343
Percentage of attendance,	.92
Percentage of attendance for the state,	.92

For the school year, 1901-1902.

Total membership of all the schools,	436
Number of pupils of all ages not enrolled elsewhere in the state,	423
Average membership of all the schools,	378
Average attendance of all the schools,	344
Percentage of attendance,	.91

—93—

Enrolment by Grades and Schools, December, 1902.

GRADE.	1	2	3	4	5	6	7	8	9	10	11	12	13	TOTAL
High	—	—	—	—	—	—	—	—	24	24	19	10	1	82
Center Grammar	—	—	—	—	—	—	18	21	—	—	—	—	—	39
Center Intermediate	15	13	17	18	—	—	—	—	—	—	—	—	—	63
Center Primary	4	7	3	5	—	—	—	—	—	—	—	—	—	19
Stony Brook	—	—	—	—	—	10	10	9	—	—	—	—	—	29
Rocky Nook Grammar	—	—	—	—	—	—	—	—	—	—	—	—	—	25
Rocky Nook Intermediate	—	—	10	15	—	—	—	—	—	—	—	—	—	25
Rocky Nook Primary	22	16	—	—	—	—	—	—	—	—	—	—	—	38
Wapping	5	3	—	6	2	—	1	2	—	—	—	—	—	19
Silver Lake	2	2	3	3	2	—	2	1	—	—	—	—	—	15
North-west	2	7	2	2	1	3	—	3	—	—	—	—	—	20
Total	50	48	35	49	33	34	22	30	25	24	19	10	1	383

Financial.

1901.

Assessed valuation of all property in town,	\$1,381,970.
Valuation per pupil, average membership,	\$3,675 00
Average valuation per pupil for the State,	\$7,319 00
Amount raised by taxation and expended for support of public schools,	\$7,366.57.
Expended for support of schools on each \$1,000 of valuation,	\$5 35.
Expended for support of schools in the state,	\$3.70.
Kingston's rank among all the towns of the state,	114.
Number of towns and cities in the state,	353.
Annual taxation cost per pupil, based on average membership,	\$19.70.
Annual taxation cost per pupil in the state,	\$27.04.
Kingston's rank,	195.

1902.

Assessed valuation of all property in town,	\$1,409,540.
Valuation per pupil,	\$3,729.00.
Amount raised by taxation and expended for support of public schools,	\$7,379.35.
Expended for support of schools on each \$1,000 of valuation,	\$5.24.
Annual taxation cost per pupil, based on average membership,	\$19.52.

Population of the town, census of 1900, 1,955.
Number of families in town, 477.

Conditions Confronting Us.

The unfavorable conditions confronting us one year ago have been remedied in part. The opening of an additional school for the higher grades at Rocky Nook places the schools of that section in a position to do satisfactory work. The intolerably congested condition of the high school, the little, inconvenient back room of the center primary, and the duplication of the grades in two schools about half a mile apart, when the pupils of each grade in both schools are not enough to give one teacher a full complement, still exist. As the improvement of these conditions is the most pressing matter demanding your attention, I give it consideration first. How to provide comfortable, convenient, well-equipped, beautiful and healthy school buildings for about three-fourths of its school population is to my mind much the most important question before the citizens of Kingston today.

I find three units of school population in town. Two of these units are distinct and easily recognized, one comprising those pupils sufficiently advanced to attend the high school; the other composed of those from the Rocky Nook neighborhood, extending from Thomas's Hill to the Plymouth line. It seems to me fitting to regard all the pupils in the remainder of the town as a third unit.

What do we find to consider in this remainder? A sparsely populated area, about three-fourths of the inhabited part of the town, containing less than fifty pupils, and a small area enclosed by a circumference formed by a radius of one mile with the town hall as a center, containing about one hundred and fifty pupils. Near this center, the high school should be located to accommodate the largest number of attendants. Thus we have in round numbers fifty pupils scattered over a large part of the town, one hundred and fifty

dwelling near the center, and a high school of over eighty. To provide for these, we have eight rooms with the following capacity:—

- The present high school building, 90 pupils.
- The Center Primary building, 45 pupils.
- The Center Intermediate building, 40 pupils.
- The Stony Brook building, 30 pupils.
- The Wapping building, 19 pupils.
- The Silver Lake building, 13 pupils.
- The Northwest building, 12 pupils.

Total, 249 pupils.

A word of explanation of this statement of the capacity of the several buildings may be necessary. The two large rooms in the high school building will comfortably and conveniently accommodate forty to fifty pupils each and not more. The small rooms should be used only for coat rooms, recitation rooms, laboratories, or libraries. The Center Primary building is not large enough for two teachers, unless one teacher is to take a few pupils, not over ten, to the small room in the rear for kindergarten or individual work. I am told that such conditions as now exist in this building may, perhaps, be found in Syria or Egypt, but scarcely elsewhere. Forty-five pupils, as many as one teacher can profitably take care of, is a fair assignment for this building. The Stony Brook building will seat thirty-five to forty pupils, but to secure that number it must be made a school of all grades or children from the south side of the railroad must be sent there. Under these conditions, I think it would be inadvisable, to say the least, to attempt to place more than thirty pupils there. The number assigned to Wapping, Silver Lake, and Northwest respectively, represent the actual number of pupils living in town in these schools in December. I think we must conclude that we have accommodations, such as they are, for no more than two hundred and fifty pupils. We need room for two hundred and eighty.

By reference to the enrollment table, it will be seen that in December there were three hundred and eighty-three pupils in all the schools of the town; eighty-two of these were in the high school, ninety-six from Rocky Nook, and two hundred and five in all the rest of the town. Included in this number are eight pupils of the Northwest school from Pembroke who would not attend our schools under the conditions which I shall propose, leaving one hundred and ninety-seven pupils to be provided for. It would be necessary to provide for a few more than the number actually in school to allow for variations, impossibility of dividing equally because of location and grading. The following table shows the number of pupils actually in school in December, the least number necessary to be provided for, and an approximate ten per cent. increase over the actual number:

Actual number in school.	Least number to be provided for	Ten per cent increase
High School, 82	85	90
Rocky Nook, 96	100	105
Rest of town, 205	215	225
Total, 383	400	420

It would seem only reasonable to provide for the moderate increase of ten per cent. and this is the number I have attempted to provide for in the plan which I have formulated.

The two schools located near the center of the Rocky Nook area well accommodate the children of this vicinity. My plan is to take the present high school building entire for the high school, discard all other buildings except the Center Intermediate, erect a four-room building in a central location and put the 225 pupils in the five rooms thus provided. This would give forty-five pupils to each room. It may seem a bold proposition to discard five school buildings and build another to take their place. But I think I can show you that it would be economy to do so. The reduction in

teachers' salaries less the cost of transportation would be sufficient to pay the interest on the cost of the building. The average salary of the eight teachers in the seven schools at present is \$370. Three less teachers would mean a salary list less by \$1,110. It would cost to bring the pupils from the Northwest on the electric not over \$100. I think it would not cost much if any more to bring the pupils from Egypt to the center than it does to carry them to Silver Lake. Suppose the additional cost for bringing them and those who live at Silver Lake be \$50, and the cost of bringing the children from Wapping be \$10 per week, \$370 per year, a liberal estimate; the total additional cost of transportation would be \$520. \$1110 less \$520 leaves \$590, the amount saved yearly by the proposed arrangement. This equals the interest at 4% on \$14,750.

What advantages would we gain for the schools, for the children in the schools, since, though we sometimes forget it, the schools are for the children, not the children for the schools? The present high school building for the exclusive use of the high school; a new four-room building, properly ventilated, fitted with modern sanitary conveniences, well-arranged and equipped for school work, in place of the present seven rooms in six scattered buildings; and well-graded schools with not over two grades to a room, instead of three schools with all grades and one school of four grades. I wish to especially call your attention to these schools of all grades. There are in these three schools and the Stony Brook school of four grades three classes of one pupil each, nine classes of two pupils each, six classes of three pupils each, and only six classes of more than three pupils each. What incentive is there, let me ask, to those pupils to do their best? What enjoyment, I might almost say, what benefit, comes from the recitation? What rivalry, what association with equals, what contest of mind and muscle which really educates us and makes us true men and women, is there for

these children? Half the joy of living for most of us is in contact with our fellows. A large part of education for any of us is ridding ourselves of provincialisms. I plead for a larger life for these children while they are pupils in our schools. I ask that they be permitted to come out and mingle with others of their age, to know what sitting, studying, reciting, playing with others of like attainments means, and thus learn to be broad and open-minded citizens knowing and appreciating their own rights and duties and respecting the rights and privileges of others.

I feel certain that every member of the committee knows that something must be done to meet the present untoward conditions of our schools. The town is expending a large sum of money each year for the schools. The thing to do is to devise a way whereby this expenditure shall return the greatest benefit to its school children. The present conditions do not admit of it. Because of the overcrowding, lack of laboratories and apparatus, poor ventilation and unsanitary conditions, children do not and can not acquire what is due them and what their parents have a right to demand. Only by giving additional facilities can those already afforded be fully utilized.

New High School Law and Improvements in Our High School.

The legislature of 1902 amended the law relating to high schools, whereby our school, by making much needed improvements, would receive from the state annually the sum of \$300 and towns not maintaining high schools of their own would have the privilege of sending their pupils here and recovering from the state the amount paid for tuition.

These improvements would, I think, secure the advantages for the present year, if adopted soon. The changes required are the adoption of a four year program of secondary studies, the employment of an additional teacher or the taking

out of the ninth grade from the school, and additional laboratory facilities and equipment.

Although it is doubtful whether the \$300 from the state and the increased amount to be received in tuition for outside pupils would pay the salary of another teacher, this seems to be an especially opportune time to give our school just the kind of improvements that I have believed it ought to receive since I have become acquainted with it. The adoption of a four year program of purely secondary studies would necessitate doing much of the present first year work in the grammar school, the reorganization of the high school program and the addition thereto of one year in mathematics, one year in science, one year in history, one year in Latin, one year in French and the introduction of two years of German. Can this ninth year work be done in the grammar school without having a ninth grade and another teacher there? I have no hesitation in saying that it can. An examination of the program for the eighth year will readily show that, if the work laid out there is done, little of the work designated for the first year of the high school not properly belonging to the secondary school is left undone. This small portion can be taken care of by a rearrangement of the work of the lower grades. I see no uncommon difficulty in introducing these improvements if we can have the necessary means. The one requisite is more room for the high school. Whenever that can be secured, I think we are in a position to make these changes, engage another teacher and equip a laboratory.

Kingston needs and wants a high school of recognized standing. If no payment would be made by the state, if we could secure no additional tuition, would we not have such a high school as the board of education deems necessary for pupils whose tuition the state is to pay? Would we not have it for our own children? Parents are asking for just those studies in the school which I propose to introduce. Some

pupils are going to school out of town because the subjects are not taught in our school, others are obliged to do without them. I know of one resident who is seriously contemplating changing his residence to some town where these subjects are offered. Shall we not make these changes and secure nearly enough in return to provide the salary for an additional teacher?

* * * *

In accordance with our recommendation in our last report, the town appropriated \$500 to repair the old school-house at Rocky Nook. In the summer the repairs were made, the room was furnished with adjustable chairs and desks, and we now have here one of the most pleasant school rooms in town. The fifth, sixth and seventh grades were transferred from the new building to this one in September making a school of about thirty pupils. In the new school are located the first and second grades, thirty-five to forty pupils, and the third and fourth grades, about twenty-five pupils. As I have said earlier in this report, this part of the town is now well provided with school buildings and teachers.

When the schools opened in September, the Center Intermediate was so overcrowded that all the pupils could not be seated in the building. It was found that a few more could be crowded into the Center Primary building, therefore the fourth grade was transferred to that school and the fifth grade at Stony Brook was combined with the same grade in the Center Intermediate.

Miss Drew, of the Northwest school, resigned at the close of the last school year. Miss Bates, of the Stony Brook school, who had been ill for some time, found, near the close of the summer vacation, that she had not sufficiently recovered to permit her to take up school work and resigned. These resignations and the opening of a third school at

Rocky Nook left three vacancies in the teaching force. These were all filled by Normal School graduates who had taught one or more years. Miss Maud H. Marston of Hyannis and a graduate of Hyannis Normal School was selected for the Northwest school. Miss Susan Casey of Hingham, a graduate of Bridgewater Normal School, was selected for the Stony Brook school. Miss Stormes was given charge of the grammar school in the old building at Rocky Nook and Miss Joan P. Gale of Intervale, N. H., a graduate of the Gorham, Maine, Normal School, was chosen for the Rocky Nook Intermediate.

As last year, I can again say a word of commendation of our teachers. They have formed a voluntary organization for professional study, which meets once a month to compare notes and discuss a topic that has been specially investigated by one or more. While such work may be necessary, busy teachers are none the less to be congratulated on engaging in it. I think it is recognized in all professions that one must devote some time to professional improvement and study of the problems which we meet. If teaching is to be a profession, teachers cannot form an exception to this rule. Our teachers appear to be taking up this work with interest and pleasure, and I feel sure that we shall all derive much benefit from it. Monthly teachers' meetings are also held for receiving directions and suggestions from the superintendent.

Special attention is being given to attendance this year. We have not hesitated to call upon the truant officer when it has appeared that he could render aid. The per cent. of attendance for the fall term was 1.64 greater than that of the corresponding period of last year. This means six more pupils in school each day for the same membership.

Your attention is called to the fact that there are very few maps and reference books in our schools. This deficiency holds back the work of the schools. There should be a set of maps in every room except the lower primary and a large

dictionary for every room. Globes are also needed for all grades above the third. I ask you to include an item for the purchase of these articles in your recommendation for an appropriation for 1903. I would refrain from mentioning relief maps because of their usual high cost, but Professor Davis's set of "Harvard Geographical Models" which are sold at a very moderate price would be so useful in giving our children a clear conception of some features of the earth's surface that I feel in duty bound to recommend their purchase.

H. H. TUCKER,
Superintendent.

KINGSTON HIGH SCHOOL.

COURSE OF STUDY.

FIRST YEAR.

Required.

American Authors; Grammar and Composition.	
Orthography.	Entire Year.
Arithmetic. Bookkeeping (single entry).	Entire Year.
Inductive Geometry.	Entire Year.
Physical Geography, Physiology and Hygiene.	Entire Year.
History of the United States. Elementary Civil Government.	Entire Year.
Writing: Social and business forms.	Entire Year.
Drawing.	Entire Year.

SECOND YEAR.

Required.

American and British authors: Rhetoric and Composition.	Entire Year.
Physics.	Entire Year.
History of England.	Entire Year.
Drawing.	Entire Year.
Electives.—Take one or two letters.	
a. Bookkeeping (Double Entry) Commercial Geography. Commercial Law.	Entire Year.
b. Algebra.	Entire Year.
c. Latin.	Entire Year.

THIRD YEAR.

Literature and Composition.	Entire Year.
General History; Ethics of Citizenship.	Entire Year.
Drawing.	Entire Year.
Electives—Take two or three letters.	
a. Chemistry, Astronomy.	Entire Year.
b. Plane Geometry.	Entire Year.
c. French.	Entire Year.
d. Latin.	Entire Year.

FOURTH YEAR.

Required.

Literature and Composition, History of English Literature.	Entire Year.
Civil Government, Economics.	Entire Year.
Drawing.	Entire Year.
Electives—Take two or three letters.	
a. Geology, Zoölogy, Botany.	Entire Year.
b. Solid Geometry, General Review of Mathematics.	Entire Year.
c. French.	Entire Year.
d. Latin.	Entire Year.

GENERAL NOTES.

Music once a week and practice.
 Rhetoricals once a month for all but first year Pupils.
 Calisthenics at the option of the Principal.

NOTES.

1. Courses must be chosen with the consent of the parents.

2. When a course has been pursued one week no change can be made except by the advice of the Principal.
 3. More than the required work may be taken with the consent of the Principal.
 4. No deviation from the regular courses can be made requiring the formation of new classes.
- Adopted, 1902.

CALENDAR FOR 1903-1904.

1903-

13 min
WINTER TERM.

High School closes March 27; other schools close March 20.

SPRING TERM. *12 min*

All schools open April 6 and close June 26.

FALL TERM. *12 min*

All schools open September 8 and close December 18.

1903-1904.

WINTER TERM.

High school opens December 28; other schools open Jan. 4. High school closes March 26; other schools close March 19.

GRADUATING EXERCISES

OF THE

CLASS OF 1902

KINGSTON HIGH SCHOOL

TOWN HALL.

Thursday Evening, June 26, at 8 o'clock.

"Certum pete finem."

PROGRAM.

K. H. S. Chorus.

Invocation.

Response by Chorus.

Francis W. Clemens.

Ethel C. Bryant.

K. H. S. Chorus.

Thomas L. Ormond.

Christine B. Holmes.

K. H. S. Chorus.

Debate:

Resolved. That Women Should Have Equal Franchise with Men.

John H. Faulkner. Affirmative.

Richard H. Hall. Negative.

Swift on His Pinions

Rev. C. V. DeNormandie

Praise to God

Why Increase Our Army and Navy

The Golden Age and Today

Soldier's Farewell to His Home

Wars for Independence

The Rise of Modern Opera

A Sailor's Song. Harper

K. H. S. Chorus,	<i>Lovely Night, Chwatal</i>
Josephine Holmes,	<i>The Story of the Red Cross Society</i>
Winthrop D. Ford,	<i>The Wealth of the United States</i>
Mary L. Dunbar,	<i>Defense of Shylock</i>
K. H. S. Chorus,	<i>The Summer's Day Ramble</i>

PRESENTATION OF DIPLOMAS.

THE ADAMS PRIZES.

Harriet B. Thompson	Francis W. Clemons
Nora M. Prendergast	Archie E. Phinney
Bertha S. Koshman	Winthrop D. Ford
Flora E. Harrub	Edward S. Howe
Mary L. Dunbar	James A. Holmes

GRADUATES.

Ethel Camilla Bryant
Francis Willard Clemons
Mary Leonard Dunbar
John Hamilton Faulkner
Winthrop Drew Ford
Richard Henry Hall
Christine Bailey Holmes
Josephine Holmes
Thomas Lawrence Ormond

POST GRADUATES.

Clara Mabel Mange Robert Ellis Cushman